



FRONT 9 RESTORATION
World's Best Restoration Cleaners

F9 COOKBOOK

The Experts Guide to Exterior Surface Restoration, Cleaning and Maintenance





FRONT 9 RESTORATION
World's Best Restoration Cleaners

p: 855-803-1133 | f: 480-393-5094 | P.O. Box 4099 | Palm Desert, CA 92261 | www.Front9Restoration.com

All text and images Copyright © 2018 Front 9 Restoration, Inc. | All Rights Reserved | Version 1.0 0318
Process patents pending. We've put a lot of work into the F9 COOKBOOK and the underlying processes. We will vigorously defend our intellectual property.

WELCOME TO THE F9 COOKBOOK

Thank you for choosing Front 9 Restoration, Inc. line of products!

The pages, flow charts and instructions in the **F9 COOKBOOK** are more than directions on how to remove a stain or combination of stains. The F9 Cookbook is a system of Processes that have been proven over and over through many years of use. Through the use of these systems we have achieved results far superior to any other manufacturers products or combination of products. Our hope for you is that you learn these systems, apply them to your business and get mind-blowing results similar to what we have grown accustomed to. Our goal is to give you an advantage, separate your company from your competition and help you to become an indispensable asset to your clients.



Craig Harrison
Founder

F9 is a Lifestyle. It's a choice to use products that are safer to you, the environment and the surfaces they are put down on. Equally important, using F9 Products is a choice to become more efficient in your procedures, making you more profitable, and a choice to raise the bar in the standard of cleanliness.

My vow to you is that as a Professional Restoration Contractor I will stand behind our products 100%. I will always give you the best available information in the highest and best interest of you and your Company. I wish you every success and to have fun on your journey. **Welcome to the F9 Team.**

A special mention to each of the Cleaning Contractors who have kindly given us permission to use their credited before and after photos throughout the F9 COOKBOOK. The camaraderie and assistance we offer each other is the key to the success we are all enjoying. **Thank you!** As always, I will continue to be a phone call away whenever you need me.



TABLE OF CONTENTS

Welcome	1	F9 Chart 4	45
F9 Products	2	F9 Chart 5	51
Surface Identification Flow Chart	3	F9 Chart 6	61
How to Use the F9 Restoration Cookbook	4	F9 Chart 7	73
F9 Chart 1	9	F9 Chart 8	87
F9 Chart 2	21	F9 Chart 9	91
F9 Chart 3	33	Notes	96

THE F9 ALL-STAR LINEUP



F9 Double Eagle Cleaner/Degreaser and Neutralizer (F9 DE)

Hence the name, F9 Double Eagle serves a “Double” purpose. Use F9 DE as the very first step in most flat surface cleaning for oil, hydrocarbon, food grease, general staining, tire marks and built-up staining. Use on Dumpster Pads, Loading Docks, Gas Stations, Parking Garages, and just about any Hard Surface. A very safe, fast and efficient product, F9 DE can cut your dwell times down to just 5 minutes and clean heavy oil stains in one pass!

Stains include: Oil, hydrocarbon, food stains and grease, tire marks, general surface accumulations and much more.

Available in Gallons, Case (4 gallons), 5 Gallon Drums, and 55 Gallon Kits



F9 Efflorescence and Calcium Remover (F9 Efflo)

F9 Calcium and Efflorescence Remover is breakthrough in the restoration and cleaning industry. F9 Efflo is a user friendly, full 31.45% strength muriatic acid replacement. This product combines a pleasant smelling buffered acid along with an excellent soaping capability to work better at lower concentrations. F9 Efflo gives the user the advantage of a full strength product while greatly reducing fuming and corrosion, thereby improving overall health and safety risk profile.

Stains include: Efflorescence, calcium, calcium carbonate, mineral stains, etch marks, copper stains, mud or red clay stains and more.

Available in Gallons, Case (4 gallons), 55 Gallon Drums, and 275 Gallons



F9 Battery Acid Rust and Restoration Cleaner (F9 BARC)

F9 BARC was formulated with a team of Scientists over a period of 6 years. Through literally 100's of reformulations we have created a perfectly blended product capable of performing insurmountable tasks! Use for all types of rust on almost all types of surfaces. Safe, fast, effective and versatile, F9 BARC is guaranteed to remove the most concrete rust, fertilizer staining and orange battery stains better than any other product on the market!

Stains include: Heavy rust, orange battery stains, fertilizer rust, snow plow blade rust, irrigation rust stains and more.

Available in Gallons, Case (4 gallons), 55 Gallon Drums, and 275 Gallons



F9 Groundskeeper (F9 GK)

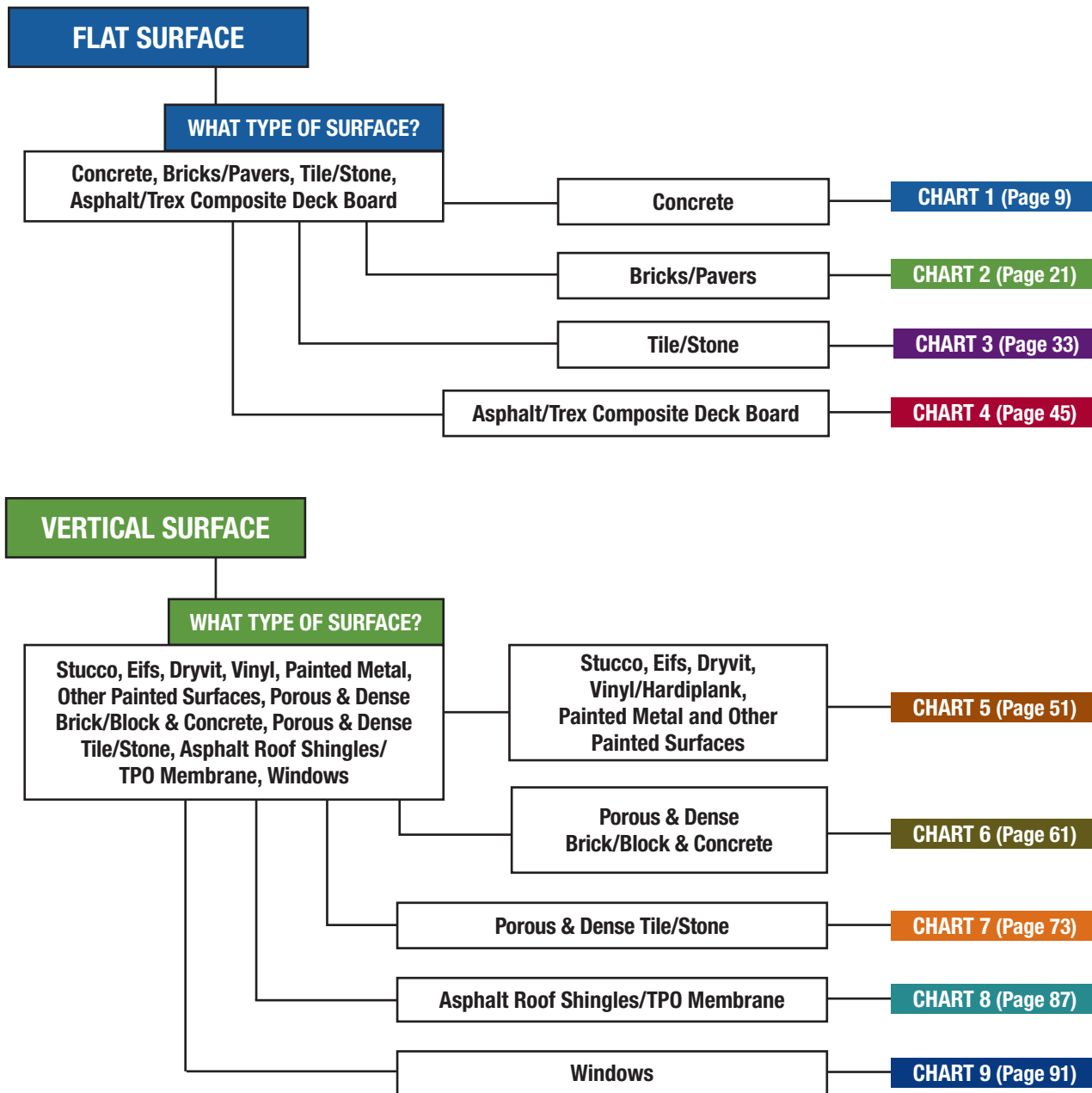
F9 Groundskeeper is our Industrial Concrete Maintenance Cleaner. This product will make the concrete absolutely “POP”, remove tire marks, soils and grime in the process. It is used when topical oil stains have been pre cleaned and the stains are actually at or beneath the surface of the concrete. Great for commercial properties, restaurant entrances and high traffic areas. When using this maintenance cleaner, your customers will be telling you they have never seen their concrete so clean. Stay cleaner longer with F9 Groundskeeper!

Available in Gallons, Case (4 gallons), 55 Gallon Drums, and 275 Gallons

F9 Restoration Flow Chart for Surface Identification



SURFACE IDENTIFICATION



DILUTIONS FOR USING F9 PRODUCTS

We give ratios as using “equal parts” of water to product. So, a 10:1 ratio means 10 parts water to 1 part product.

“Equal Parts” means if you use a cup to measure, at 10:1 you would use 10 cups of water to 1 cup of product.

To find out how many ounces of product you would need in a gallon of water, first add the “parts”. A 10:1 dilution you would add the “10” plus “1” to get 11 total parts. Take 128 (ounces in a gallon) and divide that by 11.

So, a 10:1 ratio (11 total parts) ... $128/11 = 11.6$ ounces of product per gallon of water.

A 5:1 ratio would be $128/6 = 21$ ounces of product per gallon of water.

A 20:1 ratio would be $128/21 = 6$ ounces of product per gallon of water.

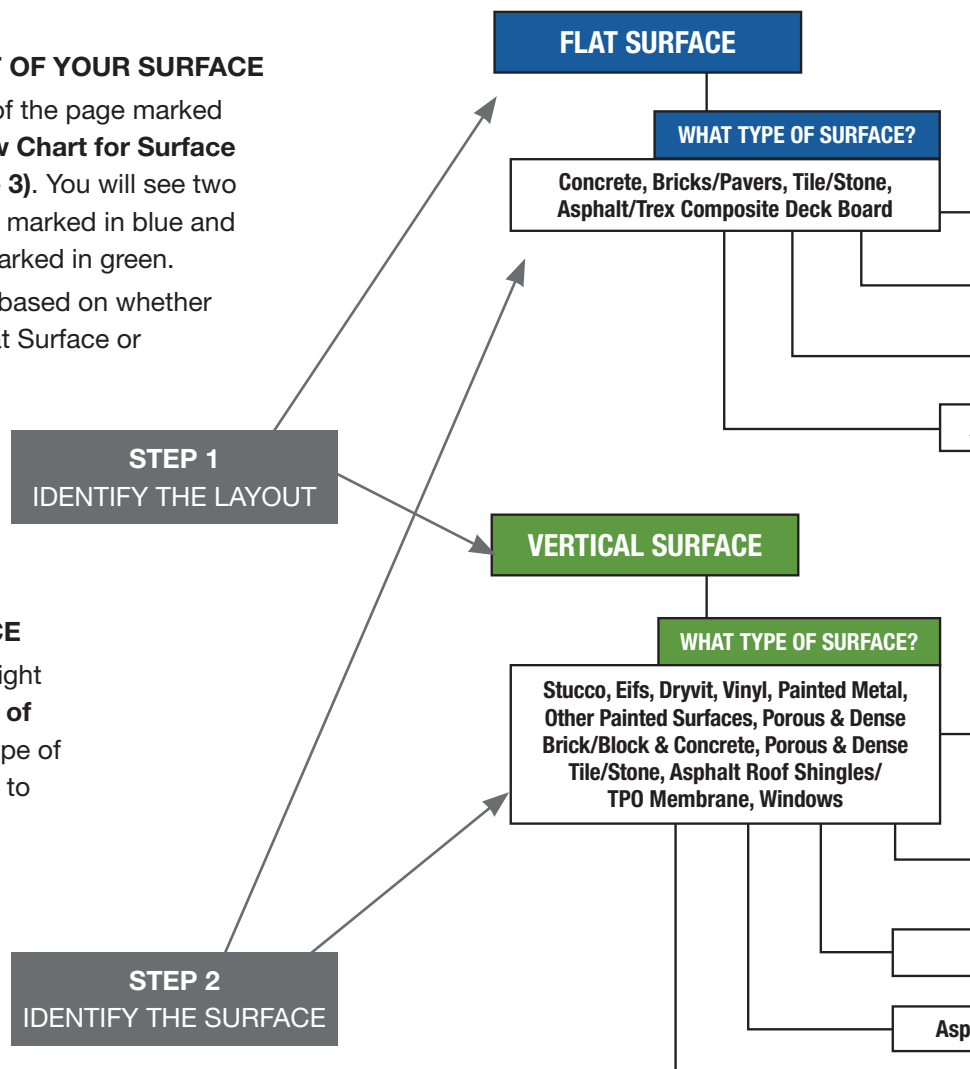
A 1:1 ratio would be 64 ounces of product per gallon of water.

HOW TO USE THE F9 RESTORATION COOKBOOK

STEP 1:

IDENTIFY THE LAYOUT OF YOUR SURFACE

1. Start on the left side of the page marked “F9 Restoration Flow Chart for Surface Identification” (Page 3). You will see two items: “Flat Surface” marked in blue and “Vertical Surface” marked in green.
2. Follow the flow chart based on whether you are cleaning a Flat Surface or Vertical Surface.



STEP 2:

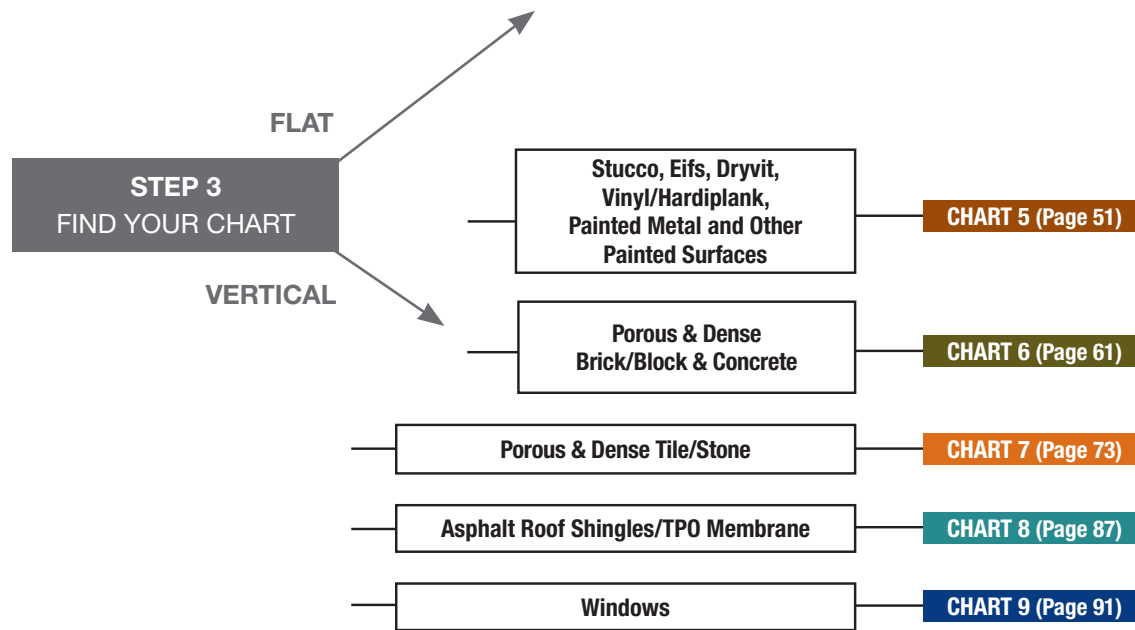
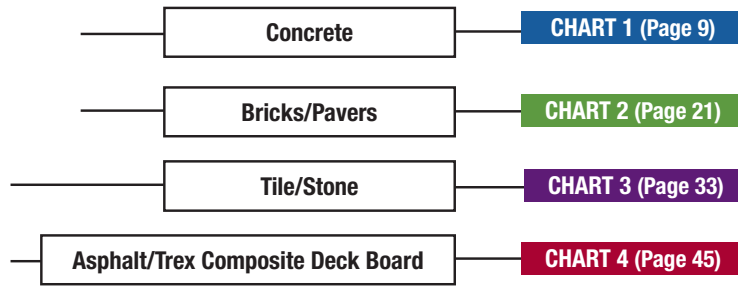
IDENTIFY THE SURFACE

1. The next box to the right is called, “What Type of Surface?” Pick the type of surface you are going to be cleaning.

STEP 3:

FIND YOUR CHART

1. Follow the Flow Chart through the types of surfaces to identify what “Chart” you will be working from. For example, if you are working on Flat Concrete, you would be working from **Chart 1**. If you are working on Flat Stone, you would find **Chart 3**. If you are working on Vertical Tile, you would find **Chart 7**.
2. Go to the Chart # for the surface you will be cleaning.



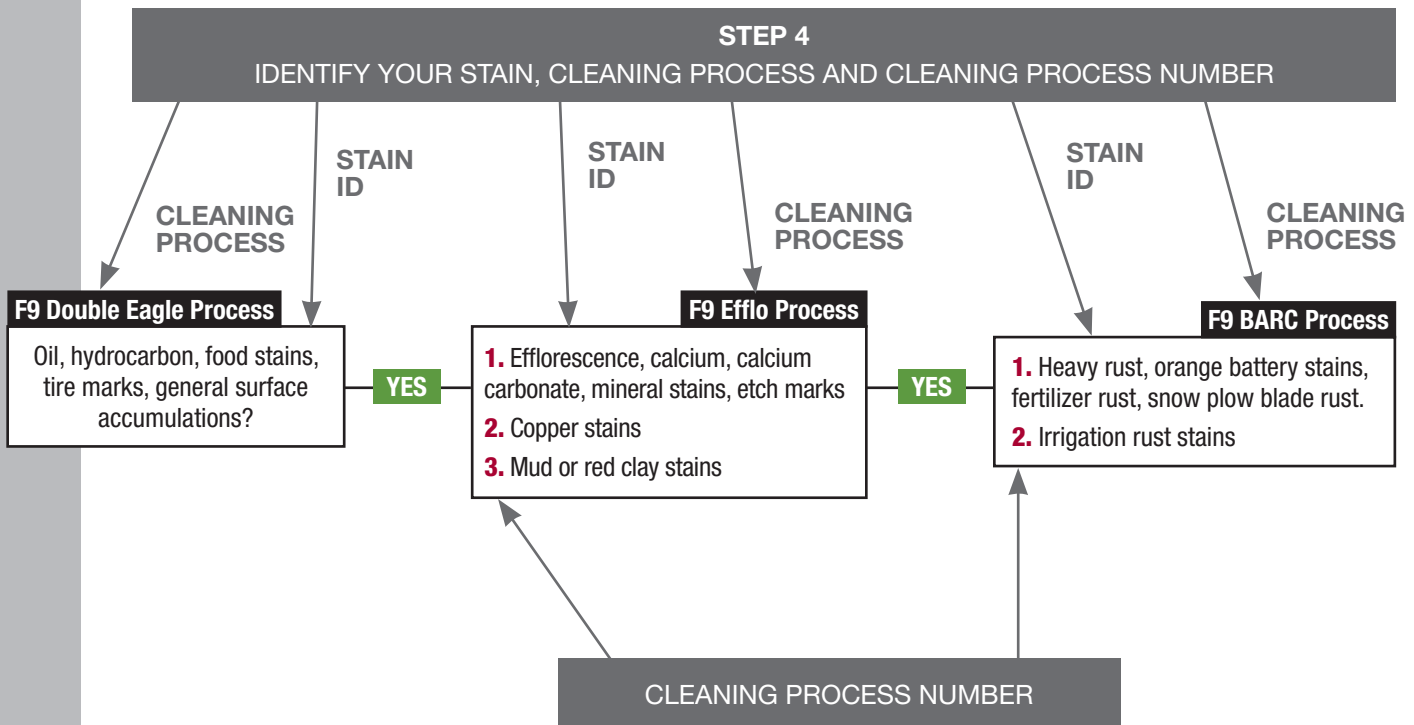
STEP 4:

IDENTIFY YOUR STAIN(S), CLEANING PROCESS AND CLEANING PROCESS NUMBER

For this example we will look at **Chart 1 Flow Chart for Flat Concrete (Page 9)**

1. For “Flat Concrete”, we have 3 different “Processes”. These processes are called the **F9 Double Eagle Process**, **F9 Efflo Process** and the **F9 BARC Process**.
2. Starting with the **F9 Double Eagle Process**, look in the box. You will see certain stains. Answer “Yes or No” and follow the flow chart according to if you have a stain in that box or not. Mark down the process number that has your stain.

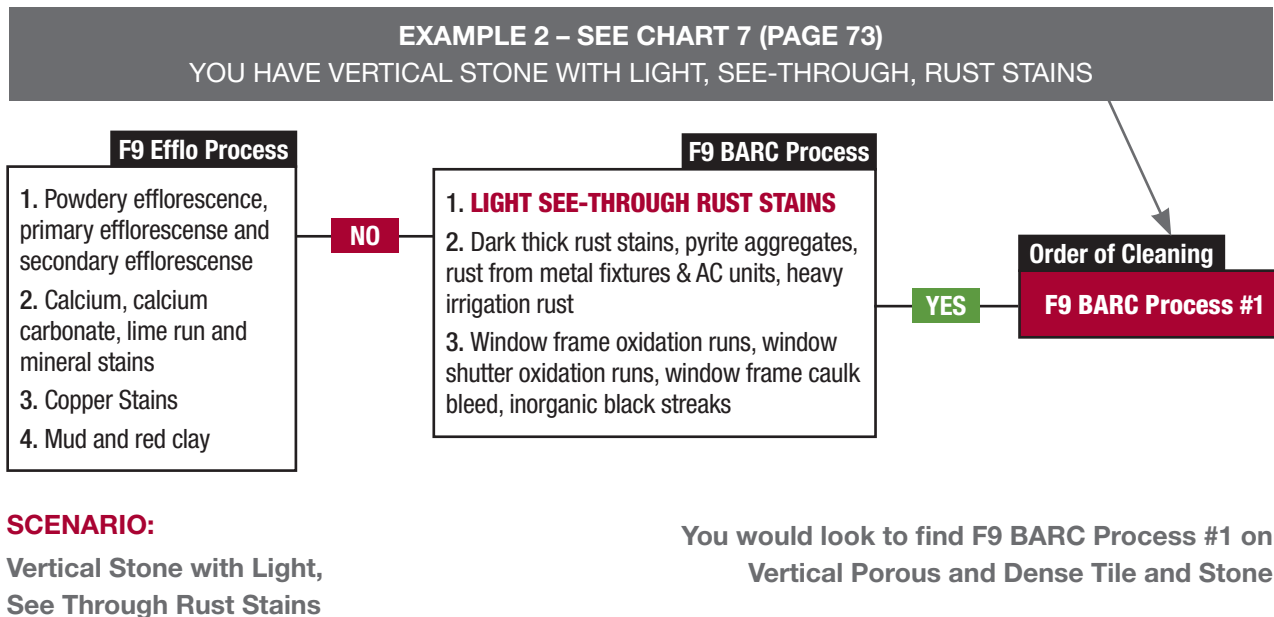
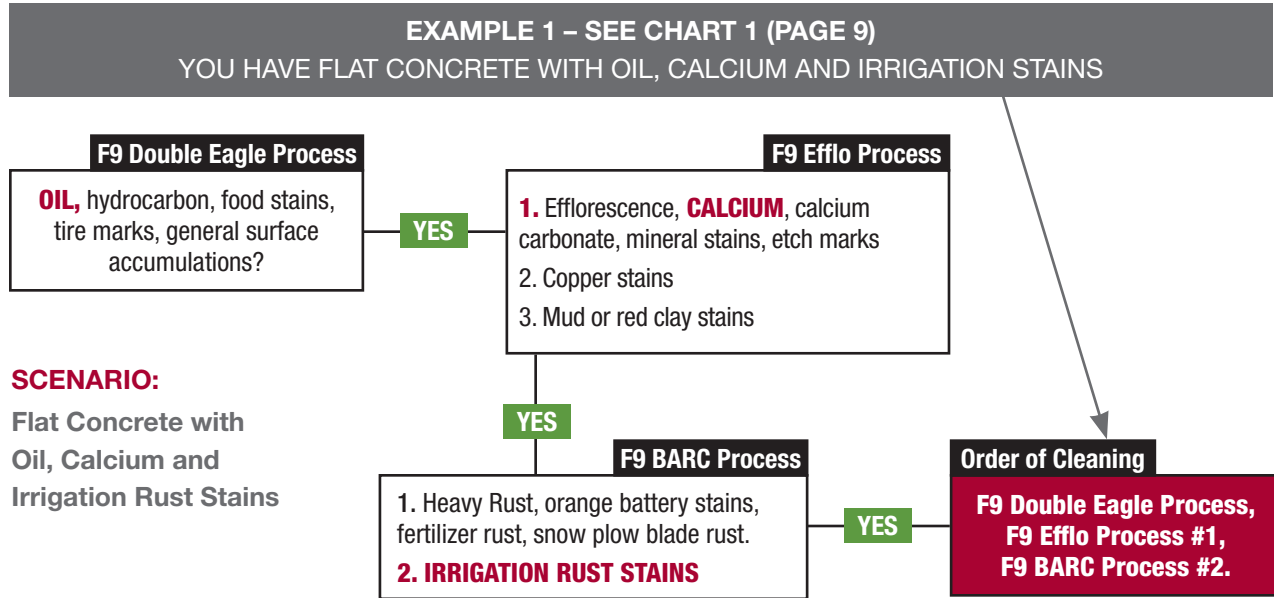
F9 FLOW CHART FOR FLAT CONCRETE

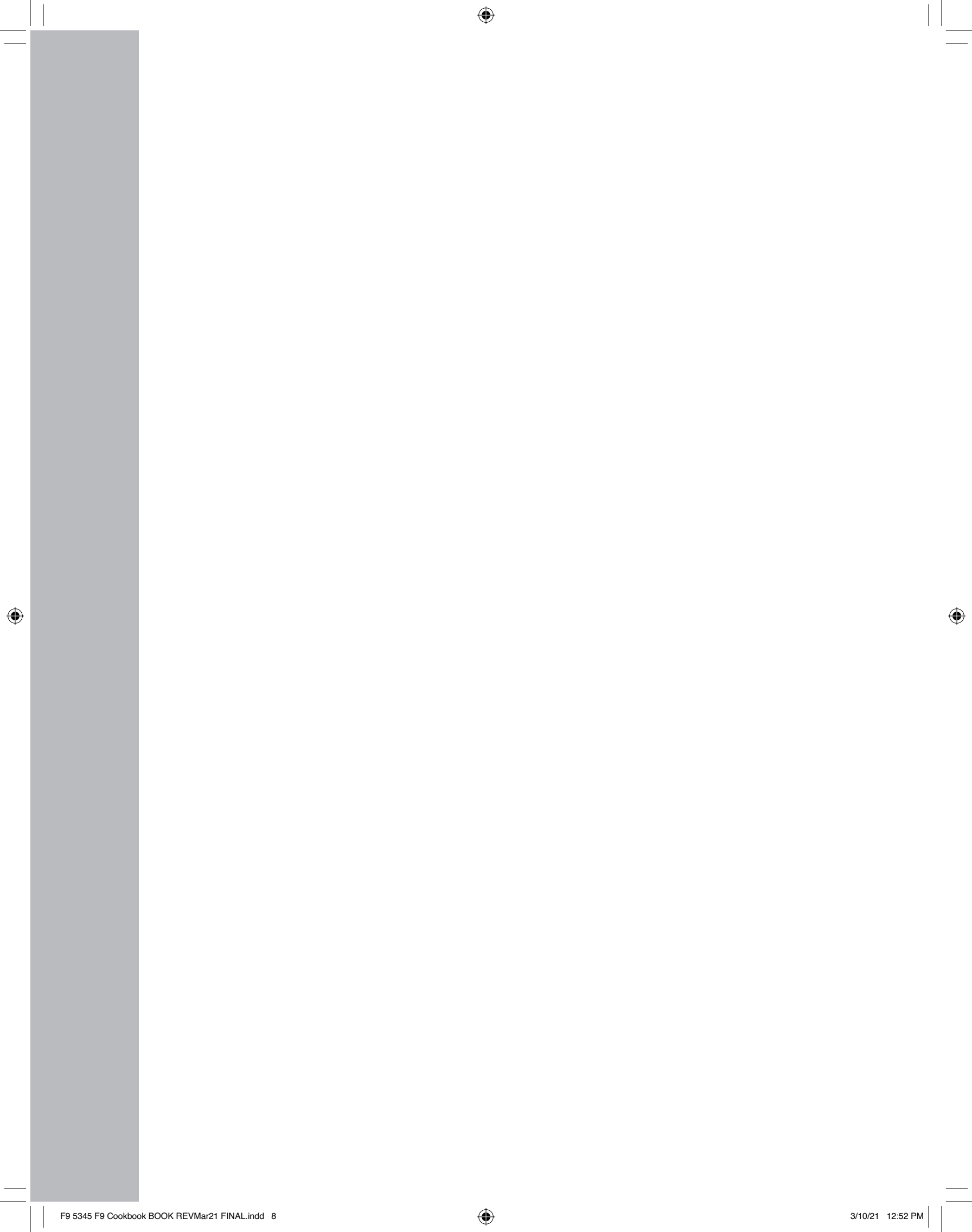


STEP 5:

CONGRATULATIONS! You have successfully identified your **SURFACE, STAIN, CLEANING PROCESS AND CLEANING PROCESS NUMBER**

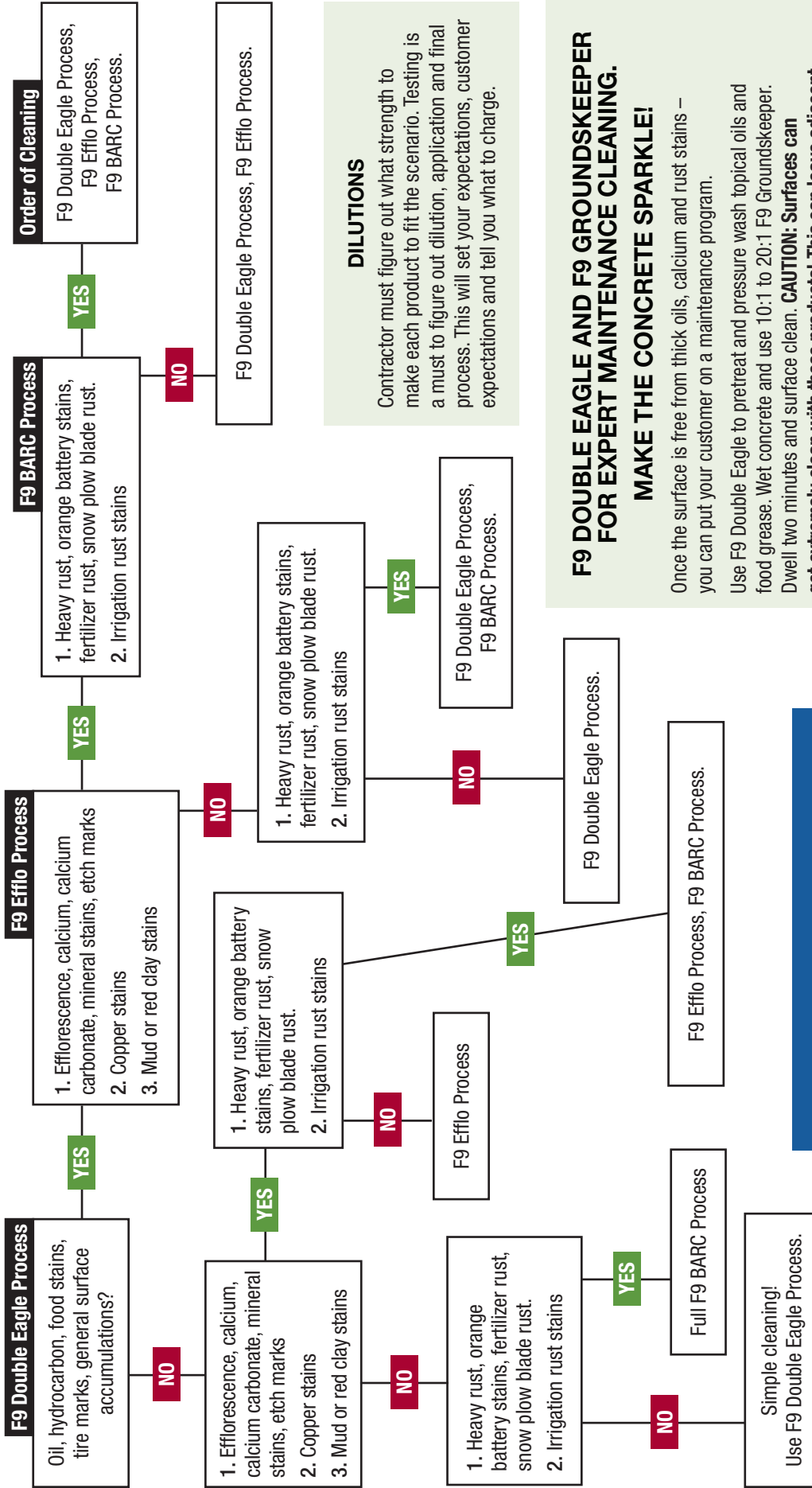
Now, follow this through to the “**Order of Cleaning**” and you are ready to get to work.





F9 Restoration Flow Chart for Flat Concrete

STAIN IDENTIFICATION & PROCESS



DILUTIONS
Contractor must figure out what strength to make each product to fit the scenario. Testing is a must to figure out dilution, application and final process. This will set your expectations, customer expectations and tell you what to charge.

F9 DOUBLE EAGLE AND F9 GROUNDSKEEPER FOR EXPERT MAINTENANCE CLEANING. MAKE THE CONCRETE SPARKLE!
Once the surface is free from thick oils, calcium and rust stains – you can put your customer on a maintenance program.
Use F9 Double Eagle to pretreat and pressure wash topical oils and food grease. Wet concrete and use 10:1 to 20:1 F9 Groundskeeper. Dwell two minutes and surface clean. **CAUTION: Surfaces can get extremely clean with these products! This can leave adjacent surfaces looking unkept. Be clear with your customer what the scope of work is to avoid call backs for areas you did not contract to clean.**

FOR HEAVY CALCIUM, CALCIUM CARBONATE AND HARD WATER STAINS IT IS RECOMMENDED TO ATTEND AN F9 TRAINING EVENT

CONFIDENTIAL
Copyright © 2018 Front 9 Restoration, Inc.

F9 Double Eagle Process for Flat Concrete

FOR: General Cleaning and Degreasing of Oil, Hydrocarbon, Food Stains, Tiremarks and Surface Accumulations. Also Use to Neutralize Low pH Products Like F9 Efflorescence and Calcium Remover (F9 Efflo).

PRODUCTS USED: F9 Double Eagle Cleaner/Degreaser & Neutralizer.

PURPOSE:

- › To clean, degrease or maintain concrete and hard surfaces.
- › To aid in removal of tire marks, soils and hydrocarbons.
- › To neutralize low pH products such as F9 Efflo and battery acid stains.

BENEFITS:

1. Has a “double” purpose: Use as your cleaner/degreaser AND as your neutralizer.
Fast Acting: Most heavy accumulations can be cut right down to the concrete in 2-5 minutes.
2. Gets the job done right the FIRST time! Most other leading brands of concrete cleaners need to be applied/surface cleaned 3-5x over to get the results of 1x with F9 Double Eagle.

COMPETITIVE ADVANTAGE: Save time on the job and get your surfaces cleaner. A win-win for both you and your customer!

FOR USE ON: Concrete, Bricks, Pavers, Tile, Stone, Grout Masonry Hard Surfaces and most surfaces in general.



Double Eagle Process
Midwest Exterior Cleaning
Huntertown, IN

DILUTIONS:

Very Heavily Soiled Surfaces: Straight

Heavily Soiled Surfaces: 1:1 to 5:1

Moderately Soiled Surfaces: 10:1

Lightly Soiled Surfaces: 20:1

Maintenance cleaning: 32:1 to 1. Add 4 oz. F9 Double Eagle per 1 Gallon of Water. You may apply direct or use downstream injection system.

DIRECTIONS:

3. **Direct Application:** Pump Sprayer, Electric or Air Diaphragm Spray System. Spray on, dwell 2-15 minutes. Manually agitate heavy areas or use floor tool with scrub brush. Surface clean after. Hot water preferred, cold water ok.
4. **Downstream Application:** Use a downstream injection system capable of giving you the correct dilution rate for the circumstances. Spray on, dwell 2-15 minutes. Manually agitate heavy areas or use floor tool and scrub brush. Surface clean after. Hot water preferred, cold water ok.
5. **X-Jet Application:** Dilute product to give you the correct dilution rate for the circumstances. Spray on, dwell 2-15 minutes. Manually agitate heavy areas or use floor tool with scrub brush. Surface clean after. Hot water preferred, cold water ok.

Note: If areas are extremely soiled, use a 175 floor tool with extra-aggressive mal-grit scrub brush to agitate.

DIRECTIONS TO USE AS A NEUTRALIZER

General Neutralizing: 8:1. Spray on surface to be neutralized. Broom in if necessary. Rinse or surface clean. Make stronger to bring final pH of discharge up. Make weaker if you need to adjust final pH down. Always check wastewater to make sure final discharge pH is correct for City BMP's.

Dougle Eagle Process
Big Guns Soft Wash
San Antonio, TX



F9 Efflo Process #1 on Concrete

FOR: Efflorescence, Calcium, Calcium Carbonate, Mineral Stains and Surface Cleaner Etching.

PRODUCTS USED: F9 Efflorescence and Calcium Remover (F9 EFFLO) and F9 Double Eagle (to Neutralize).

PURPOSE:

- > To remove powdery efflorescence, primary efflorescence and secondary efflorescence.
- > To remove calcium, calcium carbonate and mineral stains.
- > To etch concrete evenly or prepare for concrete coating
- > To remove previous etch marks
- > To remove striping from surface cleaner
- > To increase the Coefficient of Friction

TO REMOVE EFFLORESCENCE STAINS AND LIGHT SURFACE CLEANER STRIPING:

DILUTION:

8:1 to 15:1 for: Powdery Efflorescence, previous light etching marks or surface cleaner striping.

DIRECTIONS:

1. Mist concrete so it's damp, not puddling
2. Spray on concrete. Immediately broom in. Surface clean and rinse well.

Note: If you are trying to remove light etch marks from surface cleaner striping, do your surface cleaning in circles. Google “Craig's Circle Technique” to see how this is done.

Efflo Process on Concrete for
Surface Cleaner Etching
Clear Water Prowash
Columbus, OH



Use Efflo Process #1
Powdery Efflorescence on Concrete
Eco Friendly Power Washing
Palm Desert, CA



TO REMOVE CALCIUM, CALCIUM CARBONATE AND MINERAL STAINING:

DILUTIONS:

4:1 to Straight for: Calcium, Calcium Carbonate or if you are trying to produce micro-aggregate exposure in preparation for a concrete coating. **CAUTION: < 4:1 can etch, BUT Heavy Calcium Buildup requires a strong dilution.**

8:1 for: Medium depth etch marks or deeper surface cleaner striping.

2:1 to 4:1 for: Deep etching marks and if you are trying to produce a light micro-aggregate exposure.

Always test to see what dilution will work without causing damage and etching.

DIRECTIONS:

1. Mist doors, stucco, siding, metal, plants and any other areas with water.
2. Spray F9 Efflo solution evenly.
3. Quickly after applying product, mist off everything in #1 that got F9 Efflo on it.
4. Using a push broom, broom product so it is evenly distributed onto concrete. Broom in corners. A stiff bristled deck brush comes in handy for brushing into corners.
5. Use 175 Floor machine with Extra Aggressive Mal-grit or Extra Aggressive Nyla-Grit attachment to scrub all concrete evenly. Alternatively you may use a stiff brush.
6. Neutralize with F9 Double Eagle. Dilution is generally 8:1. Re-mist immediately with WATER on areas in #1 that F9 Double Eagle got on that you didn't want it to get on (doors, siding, etc).
7. Broom F9 Double Eagle into the F9 Efflo. This will help neutralize.
8. Surface clean. Water recovery is VERY helpful when surface cleaning this. Water runoff will be hard to remove from asphalt if it is allowed to dry.
9. Repeat #1-#8 as needed.

Note: if there are small calcium spots left after treatments, you may spot treat as needed and use floor tool with brush. Remember to surface clean 4-5' further out from where last product was applied. The overspray of Efflo can flow out 4-5' so surface cleaning will remove this.



Efflo Process #1 Calcium Carbonate on Concrete
Eco Friendly Power Washing
Palm Desert, CA

F9 Efflo Process #2 on Concrete

FOR: Copper Stains

PRODUCTS USED: F9 Efflorescence and Calcium Remover (F9 EFFLO) and F9 Double Eagle (to Neutralize).

PURPOSE:

> To remove greenish staining from copper runoff.

DILUTIONS FOR F9 EFFLO:

5:1 to Straight for: All copper staining.

CAUTION: < 4:1 can etch.

Always test to see what dilution will work without causing damage and etching. Start with a weak solution and work stronger if needed.

DIRECTIONS:

1. Mist doors, stucco, siding, metal, plants and any other areas with water that may come into contact with products used.
2. Apply F9 Efflo solution.
3. Quickly after applying product, mist off everything in #1 that got F9 Efflo on it.
4. Using a push broom or stiff bristled truck/deck brush, start scrubbing on stain.
5. Neutralize with F9 Double Eagle. Dilution is generally 8:1. Re-mist immediately with WATER on areas that F9 Double Eagle got on that you didn't want it to get on (doors, siding, etc).
6. Broom F9 Double Eagle into the F9 Efflo. This will help neutralize.
7. Surface clean.
8. Repeat #1-#7 as needed.



BEFORE

Efflo Process #2 on Concrete
Eco Friendly Power Washing
Palm Desert, CA



AFTER

F9 Efflo Process #3 on Concrete

FOR: Mud and Red Clay Stains

PRODUCTS USED: F9 Efflorescence and Calcium Remover (F9 EFFLO) and F9 Double Eagle (to Neutralize).

PURPOSE:

› To remove mud or red clay stains.

DILUTIONS FOR MUD STAINS:

8:1 to 5:1 but may require even stronger dilution.

CAUTION: 4:1 or stronger can etch.

Always test to see what dilution will work without causing damage and etching. Start at higher dilution (8:1) and work stronger if needed.

DILUTIONS FOR RED CLAY STAINS:

10:1 to 8:1

DIRECTIONS:

1. Mist doors, stucco, siding, metal, plants and any other areas with water that may come into contact with products used (if applicable).
2. Mist concrete with water so it is damp but not puddling.
3. Apply F9 Efflo solution evenly.
4. Quickly after applying product, mist off everything in #1 that got F9 Efflo on it (if applicable).
5. Using a push broom or stiff bristled truck/deck brush, scrub the stain (if severe). Most Red Clay stains will not require agitation.
6. **This step is only if your F9 Efflo mix was 4:1 or stronger:** neutralize with 8:1 F9 Double Eagle. Re-mist immediately with WATER on areas that F9 Double Eagle got on that you didn't want it to get on (doors, siding, etc). Broom F9 Double Eagle into the F9 Efflo. This will help neutralize.
7. Surface clean and repeat if needed.



Efflo Process #3 on Concrete for Red Clay Stains
Full Blast Pressure Washing, LLC
Decatur, AL

F9 BARC Process #1 on Concrete

FOR: Orange Battery Acid Stains, Fertilizer Rust Stains, Rust from Snow Plow Blades and Very Heavy Rust

PRODUCTS USED: F9 BARC

PURPOSE:

- › To remove orange battery stains, heavy rust stains and brighten concrete.

DILUTIONS:

Straight

DIRECTIONS:

If you have already performed the “Double Eagle Process” or the “F9 Efflo Process” and surface cleaned the concrete, skip the “Pre-Checks and Pre-Cleaning” and go directly to #1 in the “F9 BARC Application Instructions”.

For the “Full F9 BARC Process” including pre-cleaning start at #1 below.

PRE-CHECKS AND PRE-CLEANING

1. Do a finger swipe on doors to check for oxidation. If oxidation is present, make sure not to get any F9 BARC on that surface as it will clean it too and make a “clean spot”. Or you can also upsell doors, garage doors and other items with oxidation and restore them with F9 BARC too. (See Chart #5, How to Check for Oxidation, Page 52).
2. Have customer open garage door, overhead doors and be cautious of anything that is oxidized.
3. For residential home (if applicable) take the top side (hard plastic side) of truck brush and push back the rocks if they are present on sides of driveway. Make a little valley on all edges for water to flow off concrete.
4. Blow off excess dirt from driveway.
5. Lightly mist doors, walls and delicate surfaces.
6. Apply F9 Double Eagle at 8:1 on entire surface. If you have heavy oil stains you should pretreat these with 1:1 to 5:1 Double Eagle and agitate before using 8:1 on everything else. For heavy battery stains use 1:1 also to neutralize.
7. Immediately re-mist doors, walls and surfaces other than concrete that got F9 Double Eagle on them.
8. Surface Clean concrete in 2 directions (for residential). This will help ensure you do not leave surface cleaner striping.
9. Rinse well.



BARC Process #1 on Concrete
Atkins Deck Treatment
Service Inc.
Leola, Pennsylvania

F9 BARC APPLICATION INSTRUCTIONS:

1. Dry concrete completely. Use floor fans and blowers if needed.
2. Apply F9 BARC straight using a conical (round pattern) tip. BARC should be applied as a SPRAY and NOT A STREAM. Application of BARC should be enough so it sticks and stays just to the point of almost running down concrete. Do not scrub or agitate in any way on battery stains, even if you over applied the F9 BARC. Agitation may be useful on other heavy rust stains.
3. Let concrete dry and use blowers/floor fans if needed.
4. Repeat #1 but you may go very light on areas with little to no staining and heavy on areas with staining.
5. Let concrete dry.
6. Saturate concrete with water from your pressure washing gun. While concrete is wet, use a push broom to lightly do a quick 1x scrub over the entire concrete surface. This will even out the areas with different amounts of product.
7. After scrubbing, immediately rinse off the surface. Do not surface clean again. Do a LIGHT rinse off.
8. Take blower to dry bad spots. They should turn grey upon drying.

Note: Once in a while on very bad spots or if you didn't use enough product, you may have to do a 3rd light coat. This can be applied using a "spot spray". To "spot spray" make sure to fan out product 5-6' away from the stain to help blend it in. Then repeat steps #6-#8.

Another Note: If the rust is coming from metal furniture, metal fixtures, is very thick/heavy or is coming from pyrite, you may need to use a pre-spray of 10:1 to 4:1 F9 Efflo to water and scrub. Power wash after. This will cut through metal minerals and make the concrete pores open enough to be able to absorb F9 BARC.



BARC Process #1 Rust Removal on
Concrete from Irrigation Stains
Redram Services Soft Washing & Roof Cleaning
Freehold, NJ



BARC Process #1
Rust from Metals
Innovative Cleaning Services
Phoenix, AZ

F9 BARC Process #2 on Concrete

FOR: Irrigation Rust Stains

PRODUCTS USED: F9 BARC

PURPOSE:

- › To remove irrigation rust stains overflowing on concrete.

Note: There are TWO different methods of application.

DILUTIONS:

1:1 to Straight

METHOD (A) involves pre-cleaning the concrete. This method will save on product as the pre-cleaning will remove part of the stain and open up the pores of the concrete.

METHOD (B) can be a faster method. No pre-cleaning but more F9 BARC may be needed.

It is up to you to decide which method will work better and be more efficient for your particular application. You will find the best method by performing a test and demo.

DIRECTIONS: METHOD (A)

1. Pre-clean concrete by applying an 8:1 F9 Double Eagle mix to the concrete, surface clean and rinse.
2. Let dry. Blowers and fans may be used to speed up the drying.

BARC APPLICATION:

1. Apply F9 BARC straight using a conical (round pattern) tip. BARC should be applied as a SPRAY and NOT A STREAM. Application of BARC should be enough so it sticks and stays just to the point of almost running down concrete. You may scrub or agitate F9 BARC to speed up the process.
2. Let concrete dry and use blowers/floor fans if needed.
3. Repeat #1 but you may go very light on areas with little to no staining and heavy on areas with staining.
4. Let concrete dry.
5. Saturate concrete with water from your pressure washing gun. While concrete is wet, use a push broom to lightly and quickly do a 1x scrub over the concrete surface. This will even out the areas with different amounts of product.
6. While still wet and after scrubbing, immediately rinse off the surface. Do not surface clean again. Do a LIGHT rinse off.
7. Dry and evaluate.

Note: Once in a while on very bad spots or if you didn't use enough product, you may have to do a 3rd light coat. This can be applied using a "spot spray". To "spot spray" make sure to fan out product 5-6' away from the stain to help blend it in. Then repeat steps #6-#8.

DIRECTIONS: METHOD (B) Faster Method

1. No Pre-cleaning, except make sure the surface is blown clean of standing dirt and debris.
2. Use a dilution of straight (for heavy stains) up to 1:1 (for lighter stains) and spray heavily onto surface. Brush in. Let dwell for 10-15 minutes.
3. Surface Clean. Surface does not have to be completely dry.
4. If stains are still present, repeat #2 and #3.
5. Dry concrete and evaluate.

BARC Process #2 on Concrete for Irrigation Stains
Flo-Pro's Pressure Washing, LLC
Gulf Breeze, FL



F9 Groundskeeper for Expert Maintenance

FOR: Oil (beneath the surface of concrete), Hydrocarbon, Food Stains, Heavy Duty Tire marks, Heavy Duty Foot Traffic, General Surface Accumulations.

DESCRIPTION

F9 Groundskeeper is a highly buffered low pH hard surface maintenance cleaner to use after your initial degreasing, pre-cleaning or just hot water washing. F9 Groundskeeper has wetting agents and surfactants to help cut through contaminants. F9 Groundskeeper can be used on concrete, bricks, pavers, tile, most stone and other hard surfaces. Surfaces cleaned with F9 Groundskeeper may stay cleaner longer than if using high pH products.

GENERAL CLEANING INSTRUCTIONS:

Surface must be free of topical, standing oils. Pre-clean standing oils (oils not in the pores and are above the concrete) with F9 Double Eagle.

DIRECTIONS:

1. Wet Concrete/Bricks/Pavers so it is damp and not puddling. Spray on at 10:1 to 20:1. For Stone and Tile use at 20:1 to 30:1. Agitate bad oils stains and areas if needed. Dwell a minimum 2 minutes and surface clean. Hot water preferred, cold water ok.

ADVANTAGES

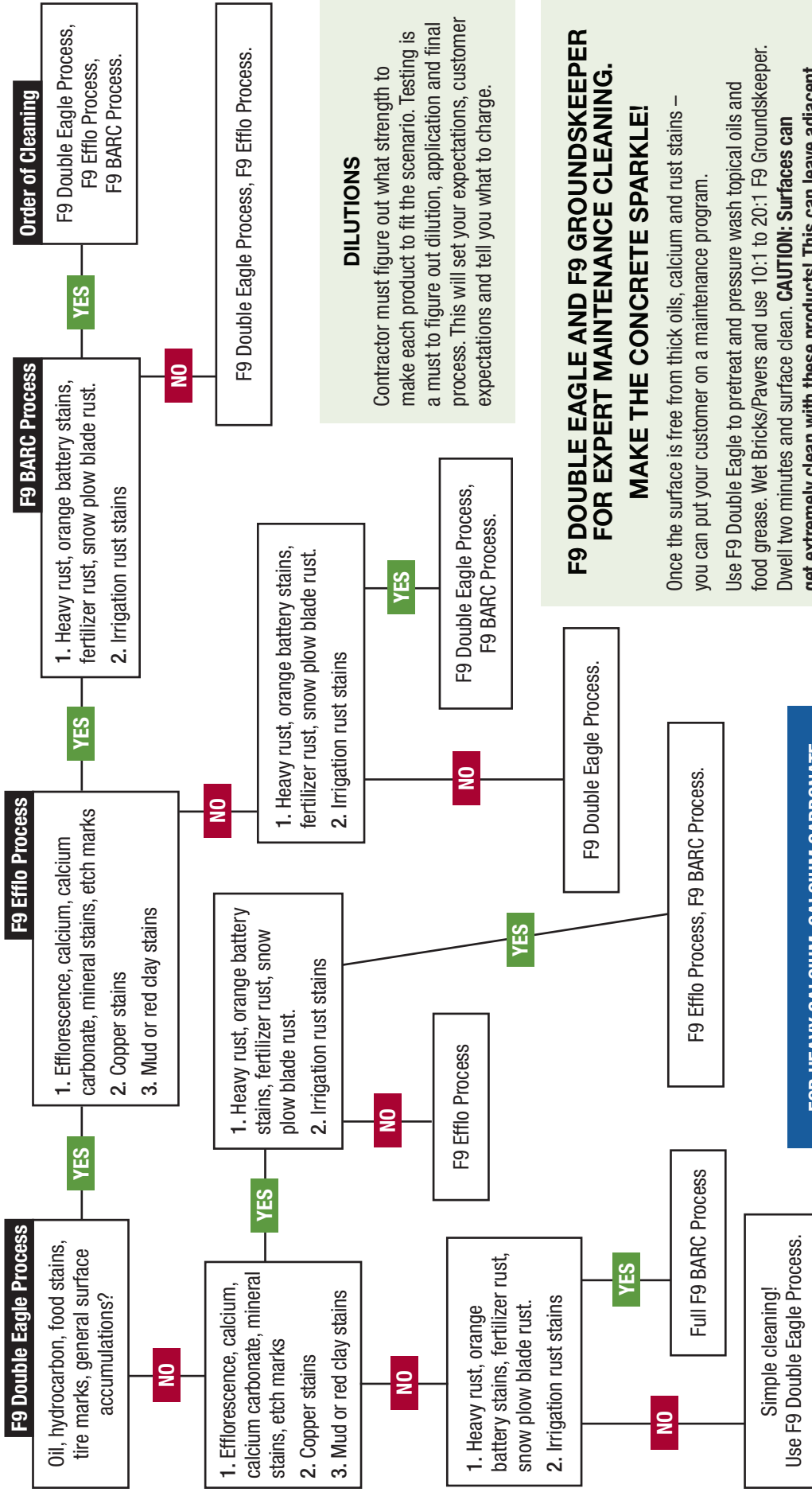
- > Reduces Time Spent On The Job by 20-40%
- > Surface Stays Cleaner Longer vs. High pH Products
- > Quickly Removes Contaminates



F9 Groundskeeper
Sparkle City Professional Services LLC
Spartanburg, SC

F9 Restoration Flow Chart for Flat Bricks/Pavers

STAIN IDENTIFICATION & PROCESS



DILUTIONS
Contractor must figure out what strength to make each product to fit the scenario. Testing is a must to figure out dilution, application and final process. This will set your expectations, customer expectations and tell you what to charge.

F9 DOUBLE EAGLE AND F9 GROUNDSKEEPER FOR EXPERT MAINTENANCE CLEANING. MAKE THE CONCRETE SPARKLE!
Once the surface is free from thick oils, calcium and rust stains – you can put your customer on a maintenance program.
Use F9 Double Eagle to pretreat and pressure wash topical oils and food grease. Wet Bricks/Pavers and use 10:1 to 20:1 F9 Groundskeeper. Dwell two minutes and surface clean. **CAUTION: Surfaces can get extremely clean with these products! This can leave adjacent surfaces looking unkept. Be clear with your customer what the scope of work is to avoid call backs for areas you did not contract to clean.**

FOR HEAVY CALCIUM, CALCIUM CARBONATE AND HARD WATER STAINS IT IS RECOMMENDED TO ATTEND AN F9 TRAINING EVENT

CONFIDENTIAL
Copyright © 2018 Front 9 Restoration, Inc.

F9 Double Eagle Process for Flat Bricks/Pavers

FOR: General Cleaning and Degreasing of Oil, Hydrocarbon, Food Stains, Tiremarks and Surface Accumulations. Use to Neutralize low pH Products Like F9 Efflorescence and Calcium Remover (F9 Efflo). Also Use to Neutralize Battery Acid Stains.

PRODUCTS USED: F9 Double Eagle Cleaner/Degreaser & Neutralizer.

PURPOSE:

- > To clean, degrease or maintain concrete and hard surfaces.
- > To aid in removal of tire marks, soils and hydrocarbons.
- > To neutralize low pH products such as F9 Efflo and battery acid stains.

BENEFITS:

1. Has a “double” purpose: Use as your cleaner/degreaser AND as your neutralizer.
Fast Acting: Most heavy accumulations can be cut right down to the concrete in 2-5 minutes.
2. Gets the job done right the FIRST time! Most other leading brands of concrete cleaners need to be applied/surface cleaned 3-5x over to get the results of 1x with F9 Double Eagle.

FOR USE ON: Concrete, Bricks, Pavers, Tile, Stone, Grout Masonry Hard Surfaces and most surfaces in general.

Double Eagle Process for Flat Bricks
(SH Added for Mold)
Aqua Pro Cleaning Solutions
Joliet, IL



DILUTIONS:

Very Heavily Soiled Surfaces: Straight

Heavily Soiled Surfaces: 1:1 to 5:1

Moderately Soiled Surfaces: 10:1

Lightly Soiled Surfaces: 20:1

Maintenance cleaning: 32:1 to 1. Add 4 oz. F9 Double Eagle per 1 Gallon of Water. You may apply direct or use downstream injection system.

DIRECTIONS:

3. **Direct Application:** Pump Sprayer, Electric or Air Diaphragm Spray System. Spray on, dwell 2-15 minutes. Manually agitate heavy areas or use floor tool. Surface clean after. Hot water preferred, cold water ok.
4. **Downstream Application:** Use a downstream injection system capable of giving you the correct dilution rate for the circumstances. Spray on, dwell 2-15 minutes. Manually agitate heavy areas or use floor tool. Surface clean after. Hot water preferred, cold water ok.
5. **X-Jet Application:** Dilute product to give you the correct dilution rate for the circumstances. Spray on, dwell 2-15 minutes. Manually agitate heavy areas or use floor tool. Surface clean after. Hot water preferred, cold water ok.

Note: If areas are extremely soiled, use a 175 floor tool with extra-aggressive mal-grit to agitate.

DIRECTIONS TO USE AS A NEUTRALIZER

General Neutralizing: 8:1. Spray on surface to be neutralized. Broom in if necessary. Rinse or surface clean. Make stronger to bring final pH of discharge up. Make weaker if you need to adjust final pH down. Always check wastewater to make sure final discharge pH is correct for City BMP's.

F9 Efflo Process #1 on Bricks/Pavers

FOR: Efflorescence, Calcium, Calcium Carbonate, Mineral Stains and to Blend Surface Cleaner Etching.

PRODUCTS USED: F9 Efflorescence and Calcium Remover (F9 EFFLO) and F9 Double Eagle (to Neutralize).

PURPOSE:

- › To remove powdery efflorescence, primary efflorescence and secondary efflorescence.
- › To remove calcium carbonate and mineral stains.
- › To etch surface evenly or prepare for concrete coating
- › To remove previous etch marks
- › To remove striping from surface cleaner
- › To increase the coefficient of friction

TO REMOVE EFFLORESCENCE STAINS AND LIGHT SURFACE CLEANER STRIPING

DILUTION:

15:1 to 12:1 for: Powdery efflorescence, primary efflorescence, secondary efflorescence, previous light etch marks or surface cleaner striping.

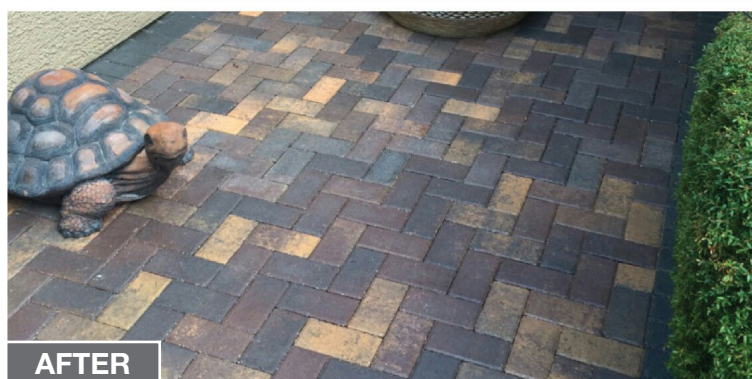
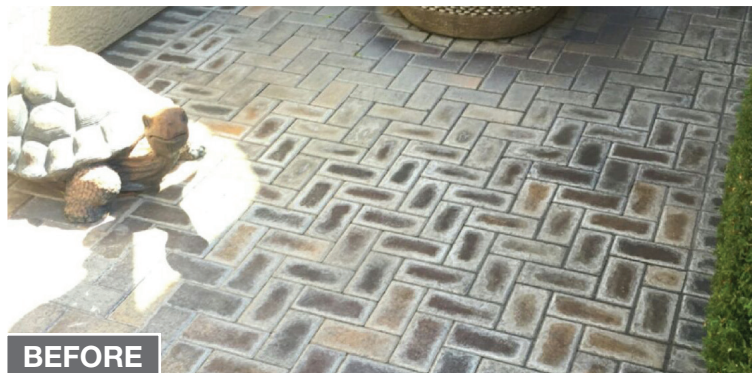
10:1 for: Medium depth etch marks or deeper surface cleaner striping.

8:1 to 4:1 for: Deep etching marks and if you are trying to produce a light micro-aggregate exposure.

Always test to see what dilution will work without causing damage and etching.

DIRECTIONS:

1. Wet surface so it is damp but not puddling.
2. Spray Efflo mix on evenly and immediately broom in.
3. If removing light etch marks, power wash using “Craig’s Circle Technique” in the Tips and Tricks Section. If just removing efflorescence, surface clean normally.



Efflo Process #1
for Calcium Carbonate on Pavers
Traidgen Industries
Las Vegas, NV

TO REMOVE CALCIUM, CALCIUM CARBONATE AND MINERAL STAINS

DILUTIONS:

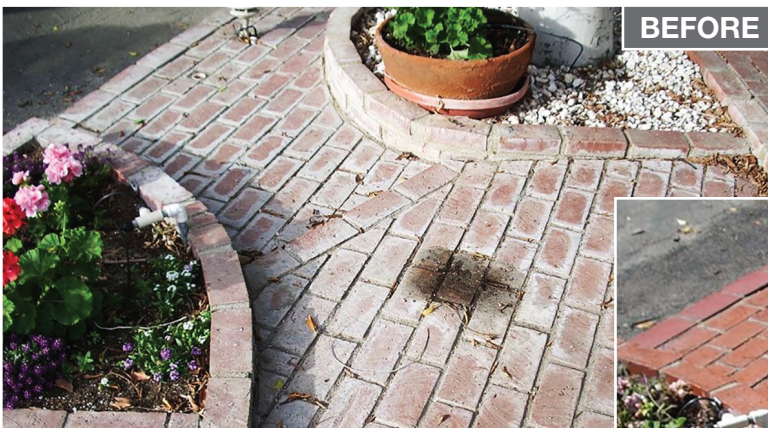
4:1 to 2:1: Calcium, Calcium Carbonate or if you are trying to produce micro-aggregate exposure.

CAUTION: < 4:1 can etch. But, sometimes your customer may want this look! Pavers that are gently stripped of the surface produce small sparkling micro-aggregates.

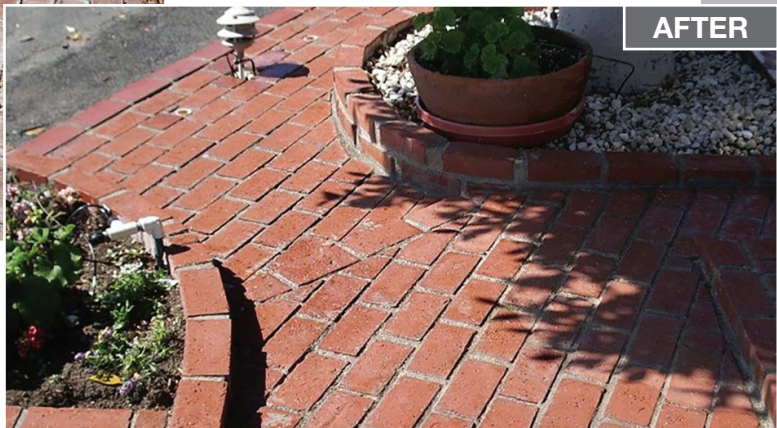
DIRECTIONS:

1. Mist doors, stucco, siding, metal, plants and any other areas with water.
2. WET bricks or pavers with water so it is damp but not puddling.
3. Spray F9 Efflo evenly onto surface (again, make sure surface is damp before application).
4. Quickly after applying product, mist off everything in #1 that got F9 Efflo on it.
5. Immediately after #4, using a push broom, broom product so it is evenly distributed onto surface. Broom in corners. A stiff bristled deck brush comes in handy for brushing into corners.
6. Use 175 Floor machine with Extra Aggressive Mal-grit or Extra Aggressive Nyla-Grit attachment to scrub all surface evenly. **CAUTION:** Use care and pay special attention to how much of the surface is being stripped off with the floor tool. Bricks and Pavers can be much softer than concrete and need less floor tool work. Alternatively you may use a stiff deck brush to agitate.
7. Neutralize with F9 Double Eagle. Dilution is generally 8:1. Re-mist immediately with WATER on areas in #1 that F9 Double Eagle got on that you didn't want it to get on (doors, siding, etc).
8. Broom F9 Double Eagle into the F9 Efflo. This will help neutralize.
9. Surface clean.
10. Repeat #1-#9 as needed. Most pavers only need 1x over and possibly a spot treatment.

Note: if there are small calcium spots left after treatments, you may spot treat as needed and use floor tool with brush. Remember to surface clean 4-5' further out from where last product was applied. The overspray of Efflo can flow out 4-5' so surface cleaning will remove this.



BEFORE



AFTER

Efflo Process #1
Calcite on Red Brick
Eco Friendly Power Washing
Palm Desert, CA

F9 Efflo Process #2 on Bricks/Pavers

FOR: Copper Stains

PRODUCTS USED: F9 Efflorescence and Calcium Remover (F9 EFFLO) and F9 Double Eagle (to Neutralize).

PURPOSE:

› To remove greenish staining from copper runoff.

DILUTIONS FOR F9 EFFLO:

5:1 to Straight for: All copper staining.

CAUTION: < 4:1 can etch.

Always test to see what dilution will work without causing damage and etching.

DIRECTIONS:

1. Mist doors, stucco, siding, metal, plants and any other areas with water that may come into contact with products used.
2. Spray F9 Efflo evenly onto surface. Make sure surface is damp before application.
3. Quickly after applying product, mist off everything in #1 that got F9 Efflo on it.
4. Using a push broom or stiff bristled truck/deck brush, start scrubbing on stain.
5. Neutralize with F9 Double Eagle. Dilution is generally 8:1. Re-mist immediately with WATER on areas in #1 that F9 Double Eagle got on that you didn't want it to get on (doors, siding, etc).
6. Broom F9 Double Eagle into the F9 Efflo. This will help neutralize.
7. Surface clean.
8. Repeat #1-#7 as needed.

F9 Efflo Process #3 on Bricks/Pavers

FOR: Mud and Red Clay Stains

PRODUCTS USED: F9 Efflorescence and Calcium Remover (F9 EFFLO) and F9 Double Eagle (to Neutralize).

PURPOSE:

- › To remove mud or red clay stains

DILUTIONS FOR MUD STAINS:

8:1 to 4:1. Only make stronger if needed.

CAUTION: < 4:1 can etch.

Always test to see what dilution will work without causing damage and etching.
Start at higher dilution (8:1) and work stronger if needed.

DIRECTIONS FOR MUD STAINS:

1. Mist doors, stucco, siding, metal, plants and any other areas with water that may come into contact with products used.
2. Wet surface so it is damp but not puddling.
3. Apply F9 Efflo evenly.
4. Quickly after applying product, mist off everything in #1 that got F9 Efflo on it (if applicable).
5. If needed, use a push broom or stiff bristled truck/deck brush, scrub the stain.
6. If your Efflo mix is 4:1 or stronger, neutralize with 8:1 F9 Double Eagle. Re-mist immediately with WATER on areas that F9 Double Eagle got on that you didn't want it to get on (doors, siding, etc).
7. Broom F9 Double Eagle into the F9 Efflo (if applicable). This will help neutralize.
8. Surface clean.
9. Repeat #1-#8 as needed.

DILUTIONS FOR RED CLAY STAINS:

12:1 to 8:1

DIRECTIONS FOR RED CLAY STAINS:

1. Wet surface with water so it is damp but not puddling.
2. Apply F9 Efflo mix.
3. Dwell 2 minutes.
4. Surface clean.
5. Repeat if needed.

Efflo Process #3
Red Clay on Pavers
Premier Coatings



F9 BARC Process #1 on Bricks/Pavers

FOR: Orange Battery Acid Stains, Fertilizer Rust Stains, Rust from Snow Plow Blades and Very Heavy Rust (Dark Brown).

PRODUCTS USED: F9 BARC

PURPOSE:

- › To remove orange battery stains, rust stains & other heavy rust issues.

DILUTIONS:

1:1 to Straight

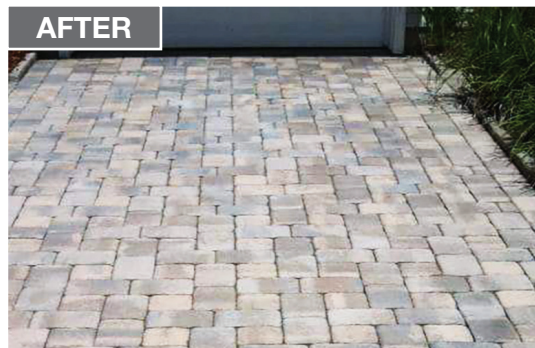
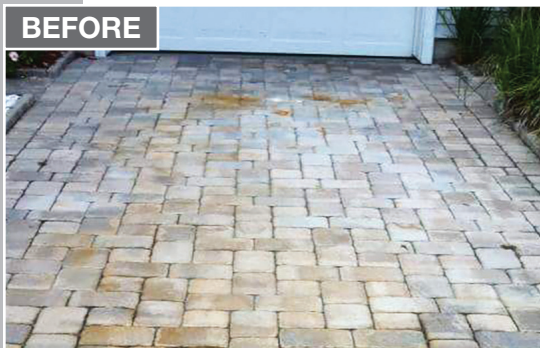
DIRECTIONS:

If you have already performed the “Double Eagle Process” or the “F9 Efflo Process” and surface cleaned the concrete, skip the “Pre-Checks and Pre-Cleaning” and go directly to #1 in the “F9 BARC Application Instructions”.

For the “Full F9 BARC Process” including pre-checks and pre-cleaning start at #1 below.

PRE-CHECKS AND PRE-CLEANING

1. Do a finger swipe on doors to check for oxidation. If oxidation is present, make sure not to get any F9 BARC on that surface as it will clean it too and make a “clean spot”. Or you can also upsell doors, garage doors and other items with oxidation and restore them with F9 BARC too. (See Chart #5, How to Check for Oxidation, Page 52).
2. Have customer open garage door, overhead doors and be cautious of anything that is oxidized.
3. For residential home (if applicable) take the top side (hard plastic side) of truck brush and push back the rocks if they are present on sides of driveway. Make a little valley on all edges for water to flow off concrete.
4. Blow off excess dirt from driveway.
5. Lightly mist doors, walls and delicate surfaces.
6. Apply F9 Double Eagle at 8:1 on entire surface. If you have heavy oil stains you should pretreat these with 1:1 Double Eagle and agitate before using 8:1 on everything else.
7. Immediately re-mist doors, walls and surfaces other than concrete that got F9 Double Eagle on them.
8. Surface clean surface. Hot water preferred if oil stains are present.
9. Rinse well.



BARC Process #1
Battery Stains on Pavers
K&J Pressure Cleaning
Tampa, FL

F9 BARC APPLICATION INSTRUCTIONS

CAUTION! Before applying F9 BARC on colored bricks and pavers, do a small test in an inconspicuous area to make sure the substrate can handle the product. In some rare cases, the bricks/pavers are colored with an iron oxide pigment. This pigment can be stripped out and you will end up with a whitish or bleached out surface. Most bricks and pavers can handle F9 BARC but always do a test first to make sure.

APPLICATION:

1. Dry bricks and pavers completely. Use floor fans and blowers if needed.
2. Apply F9 BARC using a conical (round pattern) tip. BARC should be applied as a SPRAY and NOT A STREAM. Application of BARC should be enough so it sticks and stays.
3. Let surface dry and use blowers/floor fans if needed.
4. **EVALUATE THE BRICKS AND PAVERS.** Sometimes you only will need 1 coat on this type of surface. If the stains are gone, proceed to #7. If you need to perform another coat, proceed to #5.
5. Repeat #2 but you may go very light on areas with little to no staining and heavy on areas with staining.
6. Let surface dry.
7. Saturate surface with water from your pressure washing gun. While bricks/pavers are wet, use a push broom to lightly do a quick 1x scrub over the entire surface. This will even out the areas with different amounts of product.
8. After scrubbing, immediately rinse off the surface. Do not surface clean again. Do a LIGHT rinse off.
9. Take blower to dry bad spots. The stains should disappear upon drying.

Note: Once in a while on very bad spots or if you didn't use enough product, you may have to do a 3rd light coat. This can be applied using a "spot spray". To "spot spray" make sure to fan out product 3-5' away from the stain, to help blend it in. Then repeat steps #6-#8.



BARC Process #1
Fertilizer Rust Stains on Pavers

F9 BARC Process #2 on Bricks/Pavers

FOR: Irrigation Rust Stains

PRODUCTS USED: F9 BARC

PURPOSE:

- › To remove irrigation rust stains overflowing on bricks and pavers.

DILUTIONS:

1:1 to Straight

Note: There are TWO different methods of application.

METHOD (A) involves pre-cleaning the surface. This method will save on product as the pre-cleaning will remove part of the stain and open up the pores.

METHOD (B) can be a faster method. No pre-cleaning but more F9 BARC may need to be applied.

It is up to you to decide which method will work better and be more efficient for your particular application.

F9 BARC APPLICATION INSTRUCTIONS METHOD (A):

1. Pre-clean surface by applying an 8:1 F9 Double Eagle mix, surface clean and rinse.
2. Let dry.

CAUTION! Before applying F9 BARC on colored bricks and pavers, do a small test in an inconspicuous area to make sure the substrate can handle the product. In some rare cases, the bricks/pavers are colored with an iron oxide pigment. This pigment can be stripped out and you will end up with a whitish or bleached out surface. Most bricks and pavers can handle F9 BARC but always do a test first to make sure.

CLEANING APPLICATION:

1. Apply F9 BARC straight up to 1:1 using a conical (round pattern) tip. BARC should be applied as a SPRAY and NOT A STREAM. Application of BARC should be enough so it sticks and stays. You may scrub or agitate F9 BARC to speed up the process.
2. Let surface dry and use blowers/floor fans if needed.
3. Evaluate surface to see if stains are gone. If stains are gone proceed to #6. If you need another coat, proceed to #4.
4. Repeat #1 but you may go very light on areas with little to no staining and heavy on areas with staining.
5. Let surface dry.
6. Saturate surface with water from your pressure washing gun. While bricks/pavers are wet, use a push broom to lightly do a quick 1x scrub over the entire concrete surface. This will even out the areas with different amounts of product.
7. After scrubbing, immediately rinse off the surface. Do not surface clean again. Do a LIGHT rinse off.
8. Dry and evaluate.

Note: Once in a while on very bad spots or if you didn't use enough product, you may have to do a 3rd light coat. This can be applied using a "spot spray". To "spot spray" make sure to fan out product 3-5' away from the stain, to help blend it in. Then repeat steps #6-#8.

F9 BARC APPLICATION INSTRUCTIONS METHOD (B): Faster Method

1. No Pre-cleaning, except make sure the surface is blown clean of standing dirt and debris.
2. Use a dilution of straight (for heavy stains) up to 1:1 (for lighter stains) and spray heavily onto surface. Brush in. Let dwell for 10-15 minutes.
3. Surface Clean. Surface does not have to be completely dry.
4. If stains are still present, repeat #2 and #3.
5. Dry surface and evaluate.

F9 Groundskeeper for Expert Maintenance

FOR: Oil (beneath the surface of concrete), Hydrocarbon, Food Stains, Heavy Duty Tire Marks, Heavy Duty Foot Traffic, General Surface Accumulations.

DESCRIPTION

F9 Groundskeeper is a highly buffered low pH hard surface maintenance cleaner to use after your initial degreasing, pre-cleaning or just hot water washing. F9 Groundskeeper has wetting agents and surfactants to help cut through contaminants. F9 Groundskeeper can be used on concrete, bricks, pavers, tile, most stone and other hard surfaces. Surfaces cleaned with F9 Groundskeeper may stay cleaner longer than if using high pH products.

GENERAL CLEANING INSTRUCTIONS:

Surface must be free of topical, standing oils. Pre-clean standing oils (oils not in the pores and are above the concrete) with F9 Double Eagle.

DIRECTIONS:

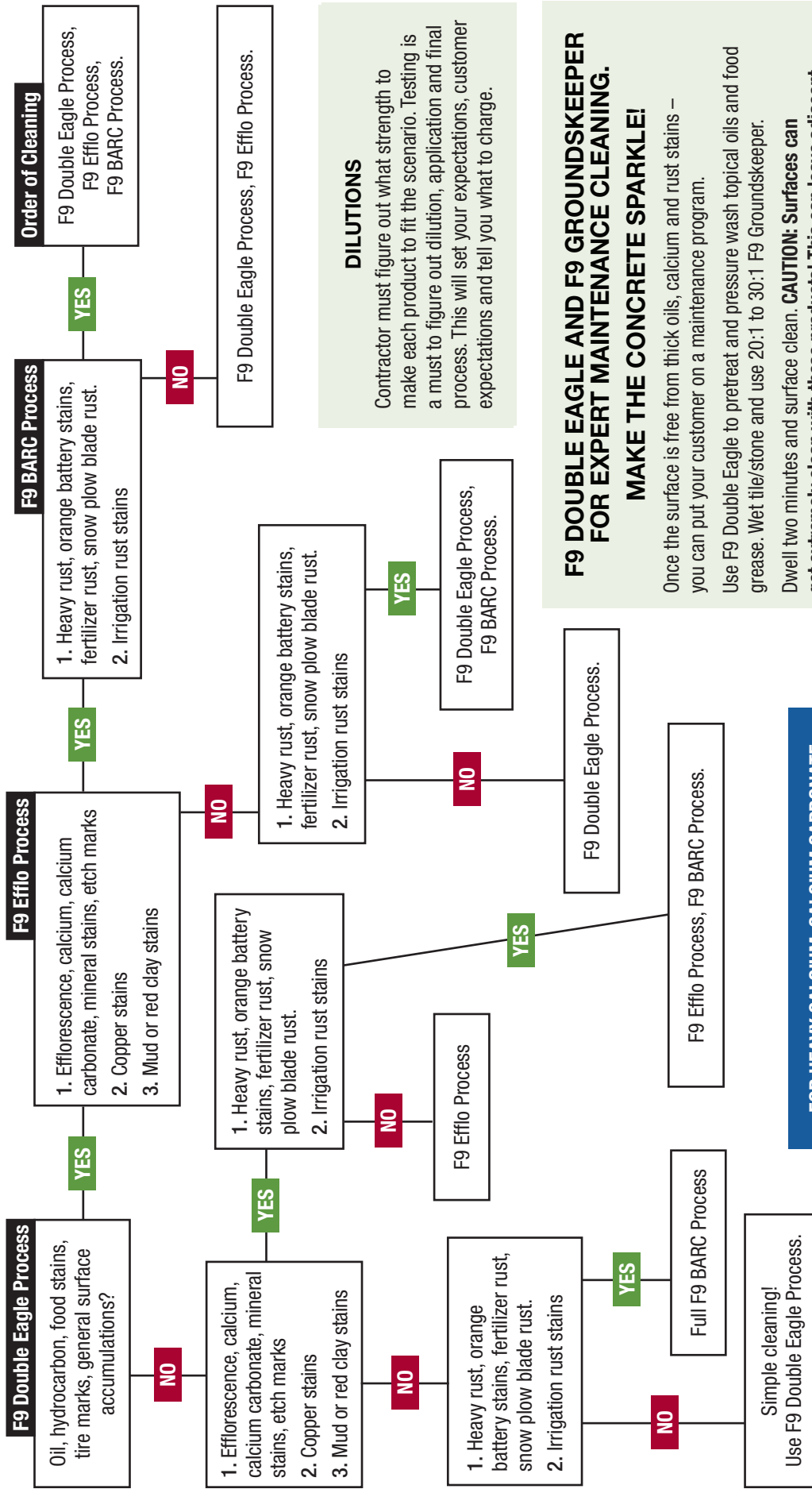
Wet Concrete/Bricks/Pavers so it is damp and not puddling. Spray on at 10:1 to 20:1. For Stone and Tile use at 20:1 to 30:1. Agitate bad oils stains and areas if needed. Dwell a minimum 2 minutes and surface clean. Hot water preferred, cold water ok.

ADVANTAGES

- › Reduces Time Spent On The Job by 20-40%
- › Surface Stays Cleaner Longer vs. High pH Products
- › Quickly Removes Contaminates

F9 Restoration Flow Chart for Flat Tile/Stone

STAIN IDENTIFICATION & PROCESS



DILUTIONS
Contractor must figure out what strength to make each product to fit the scenario. Testing is a must to figure out dilution, application and final process. This will set your expectations, customer expectations and tell you what to charge.

F9 DOUBLE EAGLE AND F9 GROUNDSKEEPER FOR EXPERT MAINTENANCE CLEANING. MAKE THE CONCRETE SPARKLE!
Once the surface is free from thick oils, calcium and rust stains – you can put your customer on a maintenance program.
Use F9 Double Eagle to pretreat and pressure wash topical oils and food grease. Wet tile/stone and use 20:1 to 30:1 F9 Groundskeeper.
Dwell two minutes and surface clean. **CAUTION: Surfaces can get extremely clean with these products! This can leave adjacent surfaces looking unkept. Be clear with your customer what the scope of work is to avoid call backs for areas you did not contract to clean.**

FOR HEAVY CALCIUM, CALCIUM CARBONATE AND HARD WATER STAINS IT IS RECOMMENDED TO ATTEND AN F9 TRAINING EVENT

CONFIDENTIAL
Copyright © 2018 Front 9 Restoration, Inc.

F9 Double Eagle Process for Flat Tile/Stone

FOR: General Cleaning and Degreasing of Oil, Hydrocarbon, Food Stains, Tiremarks and Surface Accumulations. Also Use to Neutralize low pH Products Like F9 Efflorescence and Calcium Remover (F9 Efflo).

PRODUCTS USED: F9 Double Eagle Cleaner/Degreaser & Neutralizer.

PURPOSE:

- › To clean, degrease or maintain concrete and hard surfaces.
- › To aid in removal of tire marks, soils and hydrocarbons.
- › To neutralize low pH products such as F9 Efflo.

BENEFITS:

1. Has a “double” purpose: Use as your cleaner/degreaser AND as your neutralizer.
Fast Acting: Most heavy accumulations can be cut right down to the concrete in 2-5 minutes.
2. Gets the job done right the FIRST time! Most other leading brands of concrete cleaners need to be applied/surface cleaned 3-5x over to get the results of 1x with F9 Double Eagle.

FOR USE ON: Concrete, Bricks, Pavers, Tile, Stone, Grout Masonry Hard Surfaces and most surfaces in general.

DILUTIONS:

Very Heavily Soiled Surfaces: Straight

Heavily Soiled Surfaces: 1:1 to 5:1

Moderately Soiled Surfaces: 10:1

Lightly Soiled Surfaces: 20:1

Maintenance cleaning: 32:1 to 1. Add 4 oz. F9 Double Eagle per 1 Gallon of Water. You may apply direct or use downstream injection system.

DIRECTIONS:

3. **Direct Application:** Pump Sprayer, Electric or Air Diaphragm Spray System. Spray on, dwell 2-15 minutes. Manually agitate heavy areas or use floor tool. Surface clean after. Hot water preferred, cold water ok.
4. **Downstream Application:** Use a downstream injection system capable of giving you the correct dilution rate for the circumstances. Spray on, dwell 2-15 minutes. Manually agitate heavy areas or use floor tool. Surface clean after. Hot water preferred, cold water ok.
5. **X-Jet Application:** Dilute product to give you the correct dilution rate for the circumstances. Spray on, dwell 2-15 minutes. Manually agitate heavy areas or use floor tool. Surface clean after. Hot water preferred, cold water ok.

Note: If areas are extremely soiled, use a 175 floor tool with extra-aggressive mal-grit to agitate.

DIRECTIONS TO USE AS A NEUTRALIZER

1. **General Neutralizing: 8:1.** Spray on surface to be neutralized. Broom in if necessary. Rinse or surface clean. Make stronger to bring final pH of discharge up. Make weaker if you need to adjust final pH down. Always check wastewater to make sure final discharge pH is correct for City BMP's.
2. **Downstream Application:** Use a downstream injection system capable of giving you the correct dilution rate for the circumstances. Spray on, dwell 2-15 minutes. Manually agitate heavy areas or use floor tool. Surface clean after. Hot water preferred, cold water ok.
3. **X-Jet Application:** Dilute product to give you the correct dilution rate for the circumstances. Spray on, dwell 2-15 minutes. Manually agitate heavy areas or use floor tool. Surface clean after. Hot water preferred, cold water ok.

Note: If areas are extremely soiled, use a 175 floor tool with extra-aggressive mal-grit to agitate.

DIRECTIONS TO USE AS A NEUTRALIZER

General Neutralizing: 8:1. Spray on surface to be neutralized. Broom in if necessary. Rinse or surface clean. Make stronger to bring final pH of discharge up. Make weaker if you need to adjust final pH down. Always check wastewater to make sure final discharge pH is correct for City BMP's.

F9 Efflo Process #1 on Tile/Stone

FOR: Efflorescence, Calcium, Calcium Carbonate, Mineral Stains and to Blend Etching.

PRODUCTS USED: F9 Efflorescence and Calcium Remover (F9 EFFLO) and F9 Double Eagle (to Neutralize).

PURPOSE:

- > To remove powdery efflorescence, primary efflorescence and secondary efflorescence,
- > To remove calcium carbonate and mineral stains
- > To etch evenly or prepare for concrete coating
- > To remove previous etch marks
- > To remove striping from surface cleaner
- > To increase the coefficient of friction

TO REMOVE EFFLORESCENCE STAINS AND LIGHT SURFACE CLEANER STRIPING

DILUTION:

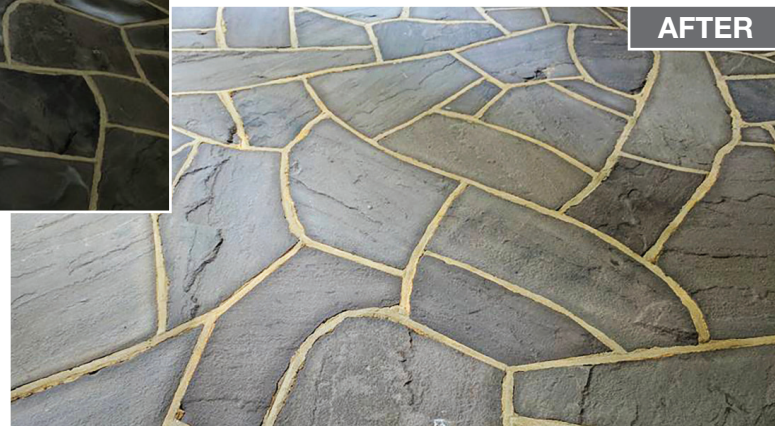
15:1 to 12:1 for: Powdery efflorescence, primary efflorescence, secondary efflorescence, previous light etch marks or surface cleaner striping.

DIRECTIONS:

1. Wet surface so it is damp but not puddling.
2. Spray Efflo mix on evenly and immediately broom in.
3. Surface clean and rinse well.
4. Repeat if needed.



Efflo Process #1 Efflorescence Removal
Mr. Clean Power Washing
Rosedale, MD



TO REMOVE CALCIUM, CALCIUM CARBONATE AND MINERAL STAINS

DILUTIONS:

4:1 to Straight for: Calcium, Calcium Carbonate. **CAUTION:** < 4:1 can etch. Some stone surfaces are soft so make sure to test.

8:1 to 4:1 for: Deep etching marks.

10:1 for: Light etch marks or surface cleaner striping.

Always test to see what dilution will work without causing damage and etching.

DIRECTIONS

1. Mist doors, stucco, siding, metal, plants and any other areas with water.
2. Wet tile and stone with water so it is damp but not puddling.
3. Spray F9 Efflo evenly onto surface (again, make sure surface is damp before application).
4. Quickly after applying product, mist off everything in #1 that got F9 Efflo on it.
5. Immediately after #4, using a push broom, broom product so it is evenly distributed onto surface. Broom in corners. A stiff bristled deck brush comes in handy for brushing into corners.
6. Use 175 Floor machine with Extra Aggressive Mal-grit or Extra Aggressive Nyla-Grit attachment to scrub all surface evenly. **CAUTION:** Use care and pay special attention to see if some of the surface is being stripped off with the floor tool. Some tile and stone need less floor tool work. Others are very hard, dense and durable. Alternatively you may use a stiff deck brush to agitate.
7. **Neutralize with F9 Double Eagle. Dilution is generally 8:1.** Re-mist immediately with WATER on areas in #1 that F9 Double Eagle got on that you didn't want it to get on (doors, siding, etc).
8. Broom F9 Double Eagle into the F9 Efflo. This will help neutralize.
9. Surface clean.
10. Repeat #1-#9 as needed. Some calcium carbonate is very thick and hard. You may need to go over these areas several times.

Note: if there are small calcium spots left after treatments, you may spot treat as needed and use floor tool with brush. Remember to surface clean 4-5' further out from where last product was applied. The overspray of Efflo can flow out 4-5' so surface cleaning will remove this.

Efflo Process #1
Hard Water Stains on Travertine
Eco Friendly Power Washing
Palm Desert, CA



F9 Efflo Process #2 on Tile/Stone

FOR: Copper Stains

PRODUCTS USED: F9 Efflorescence and Calcium Remover (F9 EFFLO) and F9 Double Eagle (to Neutralize).

PURPOSE:

- > To remove greenish staining from copper runoff.

DILUTIONS FOR F9 EFFLO:

Hard Tile and Stone – 5:1 to Straight for: All copper staining.

Soft Tile and Stone – 8:1 to 4:1 for: All Copper Staining

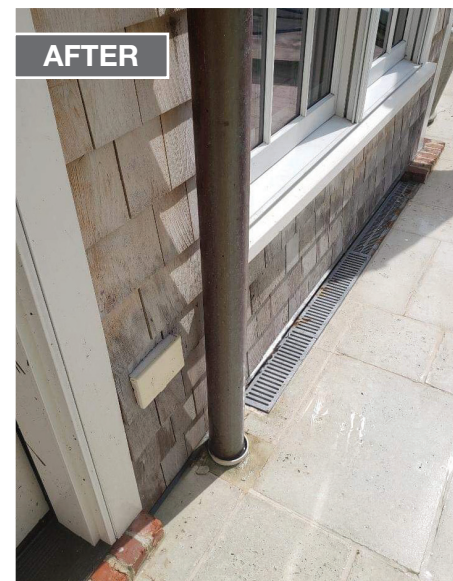
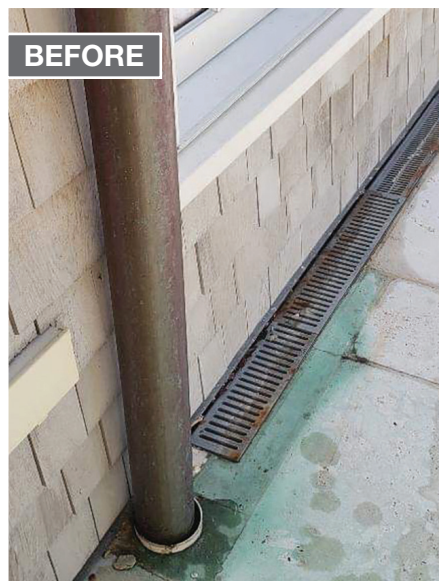
You may need to go stronger.

CAUTION: < 4:1 can etch.

Always test to see what dilution will work without causing damage and etching.

DIRECTIONS:

1. Mist doors, stucco, siding, metal, plants and any other areas with water that may come into contact with products used.
2. Spray F9 Efflo evenly onto surface. Make sure surface is damp before application.
3. Quickly after applying product, mist off everything in #1 that got F9 Efflo on it.
4. Using a push broom or stiff bristled truck/deck brush, start scrubbing on stain.
5. Neutralize with F9 Double Eagle. Dilution is generally 8:1. Re-mist immediately with WATER on areas in #1 that F9 Double Eagle got on that you didn't want it to get on (doors, siding, etc).
6. Broom F9 Double Eagle into the F9 Efflo. This will help neutralize.
7. Surface clean.
8. Repeat #1-#7 as needed.



Efflo Process #2
for Copper on Tile/Stone
Copper Stains on Stucco
Clearview Services, Inc.
Brunswick, GA

F9 Efflo Process #3 on Tile/Stone

FOR: Mud and Red Clay Stains

PRODUCTS USED: F9 Efflorescence and Calcium Remover (F9 EFFLO) and F9 Double Eagle (to Neutralize).

PURPOSE:

1. To remove mud and red clay stains.

DILUTIONS FOR MUD STAINS:

5:1 to Straight for: Mud Stains

CAUTION: < 4:1 can etch.

Always test to see what dilution will work without causing damage and etching.

Start at higher dilution (5:1) and work stronger if needed.

DIRECTIONS FOR MUD STAINS

2. Mist doors, stucco, siding, metal, plants and any other areas with water that may come into contact with products used.
3. Wet surface so it is damp but not puddling.
4. Quickly after applying product, mist off everything in #1 that got F9 Efflo on it.
5. Using a push broom or stiff bristled truck/deck brush, scrub the stain.
6. Neutralize with F9 Double Eagle. Dilution is generally 8:1. Re-mist immediately with WATER on areas that F9 Double Eagle got on that you didn't want it to get on (doors, siding, etc).
7. Broom F9 Double Eagle into the F9 Efflo. This will help neutralize.
8. Surface clean.
9. Repeat #1-#8 as needed.

DILUTIONS FOR RED CLAY STAINS:

10:1 to 1:1 for: Red Clay Stains

CAUTION: < 4:1 can etch.

Always test to see what dilution will work without causing damage and etching.

Start at higher dilution (10:1) and work stronger if needed.

DIRECTIONS FOR RED CLAY STAINS:

1. Mist surface so it is damp but not puddling.
2. Apply F9 Efflo mix (10:1 to start).
3. Let dwell 2 minutes.
4. Surface clean and rinse.
5. Repeat if needed.

F9 BARC Process #1 on Tile/Stone

FOR: Heavy rust, orange battery stains, fertilizer rust, snow plow blade rust.

PRODUCTS USED: F9 BARC

PURPOSE:

- › To remove orange battery stains, rust stains & other heavy rust issues.

DILUTION:

2:1 to 1:1 (Water to F9 BARC)

DIRECTIONS:

If you have already performed the “Double Eagle Process” or the “F9 Efflo Process” and surface cleaned the concrete, skip the “Pre-Checks and Pre-Cleaning” and go directly to #1 in the “F9 BARC Application Instructions”.

For the “Full F9 BARC Process” including pre-cleaning start at #1 below.

PRE-CHECKS AND PRE-CLEANING

1. Do a finger swipe on doors to check for oxidation. If oxidation is present, make sure not to get any F9 BARC on that surface as it will clean it too and make a “clean spot”. Or you can also upsell doors, garage doors and other items with oxidation and restore them with F9 BARC too. To “spot spray” make sure to fan out product 3-5' away from the stain, to help blend it in. Then repeat steps #6-#8.
2. Have customer open garage door, overhead doors and be cautious of anything that is oxidized.
3. For residential home (if applicable) take the top side (hard plastic side) of truck brush and push back the rocks if they are present on sides of driveway. Make a little valley on all edges for water to flow off concrete.
4. Blow off excess dirt from driveway.
5. Lightly mist doors, walls and delicate surfaces.
6. Apply F9 Double Eagle at 8:1 on entire surface. If you have heavy oil stains you should pretreat these with 5:1 Double Eagle and agitate before using 8:1 on everything else.
7. Immediately re-mist doors, walls and surfaces other than the bricks and pavers that got F9 Double Eagle on them.
8. Surface Clean surface. Hot water preferred if oil stains are present.
9. Rinse well.



BARC Process #1
Heavy Rust and Fertilizer Rust Stains Spray
Soft Exterior Cleaning
Smyrna Beach, FL

F9 BARC APPLICATION INSTRUCTIONS

CAUTION! Before applying F9 BARC on Tile and Stone, do a small test in an inconspicuous area to make sure the substrate can handle the product. Some softer tile and stone surfaces can “bleach out” if the product is left on too long or if product dries. Very important to test on tile and stone surfaces if you’re not sure. Don’t let dry.

IMPORTANT: DO NOT LET F9 BARC DRY ON TILE AND STONE. To help speed the process, lightly agitate bad areas. Rinse off before product dries.

DIRECTIONS:

1. Make sure stone or tile surface is dry. Use floor fans and blowers if needed.
2. Apply F9 BARC using a conical (round pattern) tip. BARC should be applied as a SPRAY and NOT A STREAM. Application of BARC should be enough so it sticks and stays. You may agitate surface with a soft or stiff bristled broom or truck/deck brush.
3. Do not let surface dry. If surface begins to dry and stains are not gone, you may either re-mist F9 BARC and agitate again or rinse everything off with water. Do not do more than 2-3 light applications of F9 BARC before rinsing off.
4. If stains are still present, repeat #2 and #3 until stains are gone.
5. Dry surface and evaluate.
6. Take blower to dry bad spots. The stains should disappear upon drying if they are not gone already.

Note: If you over applied F9 BARC or allowed F9 BARC to dry on Tile and Stone surfaces, you may get a chalking or hazing. This can normally be remedied by using a 4:1 water to F9 Efflo solution, spraying on surface, scrubbing with stiff deck brush and then surface cleaning.



BARC Process #1
Heavy Rust on Granite



F9 BARC Process #2 on Tile/Stone

FOR: Irrigation Rust Stains

PRODUCTS USED: F9 BARC

PURPOSE:

- › To remove irrigation rust stains overflowing on tile and stone.

F9 BARC APPLICATION INSTRUCTIONS:

CAUTION! Before applying F9 BARC on Tile and Stone, do a small test in an inconspicuous area to make sure the substrate can handle the product. Some softer tile and stone surfaces can “bleach out” if the product is left on too long or if product dries. Very important to test on tile and stone surfaces if you’re not sure. Don’t let dry.

IMPORTANT: DO NOT LET F9 BARC DRY ON TILE AND STONE. Instead, lightly agitate product on bad areas. Rinse off before product dries.

DILUTIONS:

2:1 to 1:1 (Water to F9 BARC)

DIRECTIONS:

1. Make sure stone or tile surface is dry.
2. Apply F9 BARC using a conical (round pattern) tip. BARC should be applied as a SPRAY and NOT A STREAM. Application of BARC should be enough so it sticks and stays. You may agitate surface with a soft or stiff bristled broom or truck/deck brush.
3. Dwell 2-10 mins, agitate if necessary.
4. Do not let surface dry. If surface begins to dry and stains are not gone, you may either re-mist F9 BARC and agitate again or rinse everything off with water. Do not do more than 2-3 light applications of F9 BARC before rinsing off.
5. If stains are still present, repeat #2 and #3 until stains are gone.
6. Dry surface and evaluate.
7. Take blower to dry bad spots. The stains should disappear upon drying if they are not gone already.

Note: If you over applied F9 BARC or allowed F9 BARC to dry on Tile and Stone surfaces, you may get a chalking or hazing. This can normally be remedied by using a 4:1 water to F9 Efflo solution, spraying on surface, scrubbing with stiff deck brush and then surface cleaning.



BARC Process #2
Irrigation Rust Stains on Tile

F9 Groundskeeper for Expert Maintenance

FOR : Oil (beneath the surface of concrete), Hydrocarbon, Food Stains, Heavy Duty Tire marks, Heavy Duty Foot Traffic, General Surface Accumulations.

DESCRIPTION

F9 Groundskeeper is a highly buffered low pH hard surface maintenance cleaner to use after your initial degreasing, pre-cleaning or just hot water washing. F9 Groundskeeper has wetting agents and surfactants to help cut through contaminants. F9 Groundskeeper can be used on concrete, bricks, pavers, tile, most stone and other hard surfaces. Surfaces cleaned with F9 Groundskeeper may stay cleaner longer than if using high pH products.

GENERAL CLEANING INSTRUCTIONS:

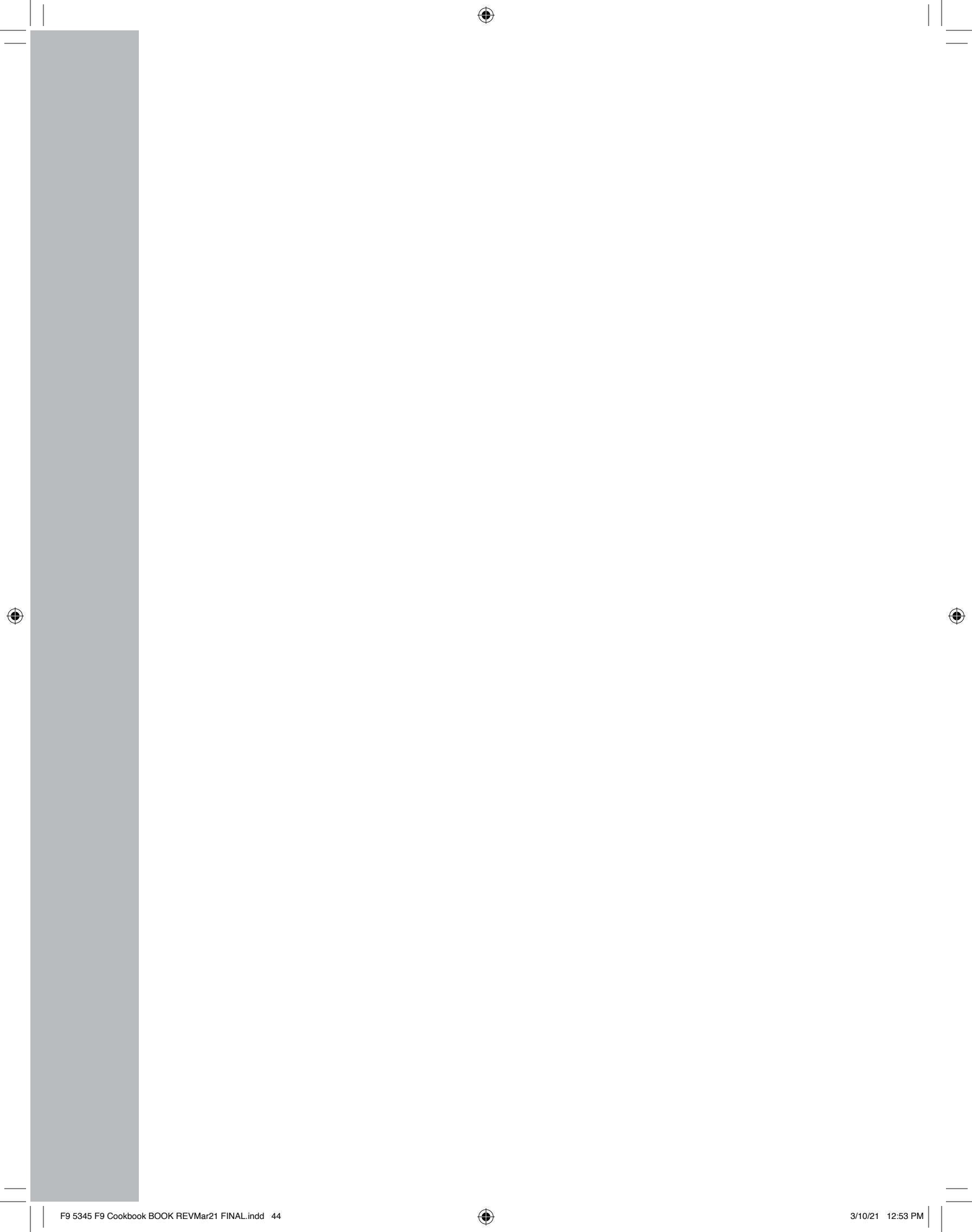
Surface must be free of topical, standing oils. Pre-clean standing oils (oils not in the pores and are above the concrete) with F9 Double Eagle.

DIRECTIONS:

Wet Concrete/Bricks/Pavers so it is damp and not puddling. Spray on at 10:1 to 20:1. For Stone and Tile use at 20:1 to 30:1. Agitate bad oils stains and areas if needed. Dwell a minimum 2 minutes and surface clean. Hot water preferred, cold water ok.

ADVANTAGES

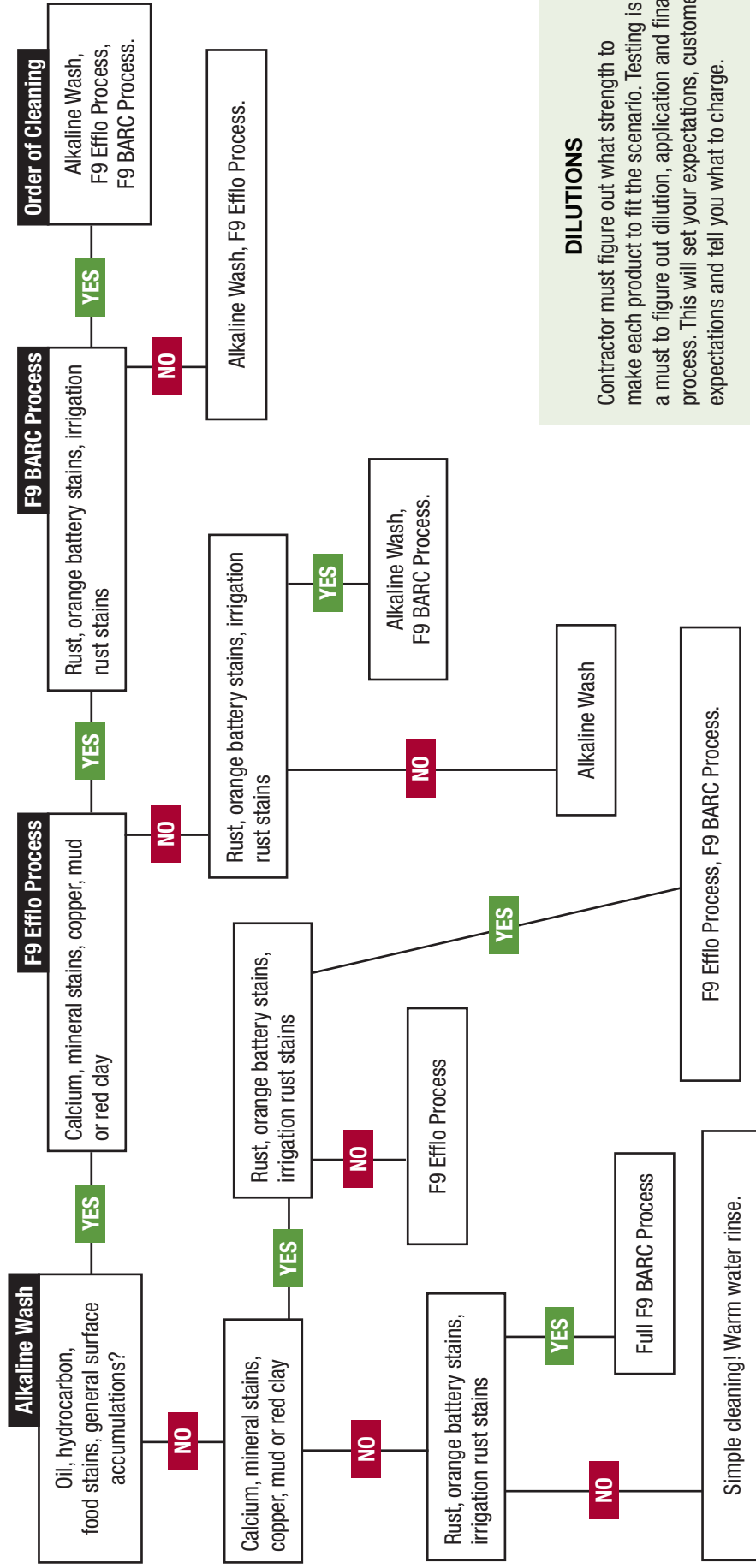
- › Reduces Time Spent On The Job by 20-40%
- › Surface Stays Cleaner Longer vs. High pH Products
- › Quickly Removes Contaminates



F9 Restoration Flow Chart for Asphalt/Trex Composite Deck Board



STAIN IDENTIFICATION & PROCESS



DILUTIONS
Contractor must figure out what strength to make each product to fit the scenario. Testing is a must to figure out dilution, application and final process. This will set your expectations, customer expectations and tell you what to charge.

**FOR HEAVY CALCIUM, CALCIUM CARBONATE AND HARD WATER STAINS
IT IS RECOMMENDED TO ATTEND AN F9 TRAINING EVENT**

CONFIDENTIAL
Copyright © 2018 Front 9 Restoration, Inc.

PRECHECKS: How to Check for Oxidation

FOR: Asphalt/Trex Composite Deck Board

DESCRIPTION: Oxidation occurs when heat and oxygen combine to break down the molecular structure of a material, such as paint. Oxidation can also occur on vinyl and other building materials, even concrete

DIRECTIONS:

It is important to do a check for oxidation on the surface you are going to be cleaning. Simply run your finger down the surface. If there is a chalky substance or residue on your finger, then the surface is most likely oxidized.

The problem with an oxidized surface is that it can be cleaned (oxidation removed) in the process of the cleaning the stain. If oxidation is removed, the new surface will be exposed underneath and look different than the area surrounding it.

If you have oxidation you should let your homeowner or property manager know. Get their input as to how to proceed. You should always do a test in an inconspicuous area to determine how much chemical and pressure the surface can handle and still blend into the areas that aren't oxidized.

This can be a tricky balance to restore or clean a stain and get it to blend into the background of an oxidized surface. Sometimes you can blend it, sometimes you can't. Your test, demo and customer feedback will tell you what to expect and what to do. You may get away with cleaning the stain and getting it to blend, or you may need to do much more of an area to get everything to look even.



Stucco oxidation



Painted surface oxidation



Alkaline Wash on Asphalt/ Trex Composite Deck Board

FOR: Treating Oil Stains, Food Stains and General Gleaning on Asphalt and Asphalt/Trex Composite Deck Board.

PRODUCTS USED: F9 Double Eagle

Note: Do not use F9 Double Eagle on Asphalt. Asphalt is a very sensitive surface. We currently do not have a product for removing oil stains out of asphalt. Please call F9 Corporate Headquarters for advice 1-855-803-1133

TREX COMPOSITE DECK BOARD ALKALINE WASH INSTRUCTIONS:

DILUTIONS:

5:1 to 15:1 for: Cleaning Dirt, Grime and Oils

DIRECTIONS:

1. Perform "Oxidation Prechecks". Make sure no oxidation is present.
2. Spray F9 Double Eagle mix.
3. Dwell 2-10 minutes. Agitate if needed.
4. Rinse off with warm water.

F9 Efflo Process on Asphalt/ Trex Composite Deck Board

FOR: Calcium, Mineral Stains, Copper, Mud and Red Clay Stains

PRODUCTS USED: F9 EFFLO

PURPOSE:

- › To remove calcium, calcium carbonate, calcite and mineral stains.
- › To remove mud and red clay stains.

DILUTIONS:

2:1 to Straight for: Severe Calcium and Mineral Stains

10:1 to 3:1 for: Light to Medium Calcium and Mineral Stains

8:1 to 4:1 for: Copper, Mud and Red Clay Stains

CAUTION! Asphalt and Trex Composite Deck Board are sensitive surfaces

Sometimes these surfaces can lighten or “bleach out” if product is too strong or left on for too long. Always do a test in an inconspicuous area to make sure Asphalt surface can handle the product in the dilution and process you intend to use on the rust stains.

DIRECTIONS:

1. Use a blower to remove large debris or a pressure washer to pre-clean any topical dirt, dust and other topical accumulations. Stained areas must be clean before application of F9 Efflo.
2. Mist surface with water so it is damp and not puddling.
3. Apply 1-2 mist applications of F9 Efflo at proper dilution rates depending on severity of staining
4. Let dwell for 2-10 minutes. Light brushing is OK and will help to speed up process.
5. Rinse off product before surface dries. Do not use a surface cleaner on asphalt. Trex Composite Deck Board is OK at lower pressures. Rinse with your wand only.
6. Repeat process until gone.

F9 BARC Process on Asphalt/ Trex Composite Deck Board

FOR: Rust, Orange Battery Stains and Irrigation Rust Stains

PRODUCTS USED: F9 BARC

PURPOSE:

- To remove irrigation rust stains, orange battery stains and other rust stains from asphalt and Trex Composite Deck Board

DILUTIONS:

1:2 to 1:1 for: Orange Battery Stains and Heavy Rust Stains

1:1 to 2:1 for: Light to Medium Rust Stains

CAUTION! Asphalt and Trex Composite Deck Board are a sensitive surface.

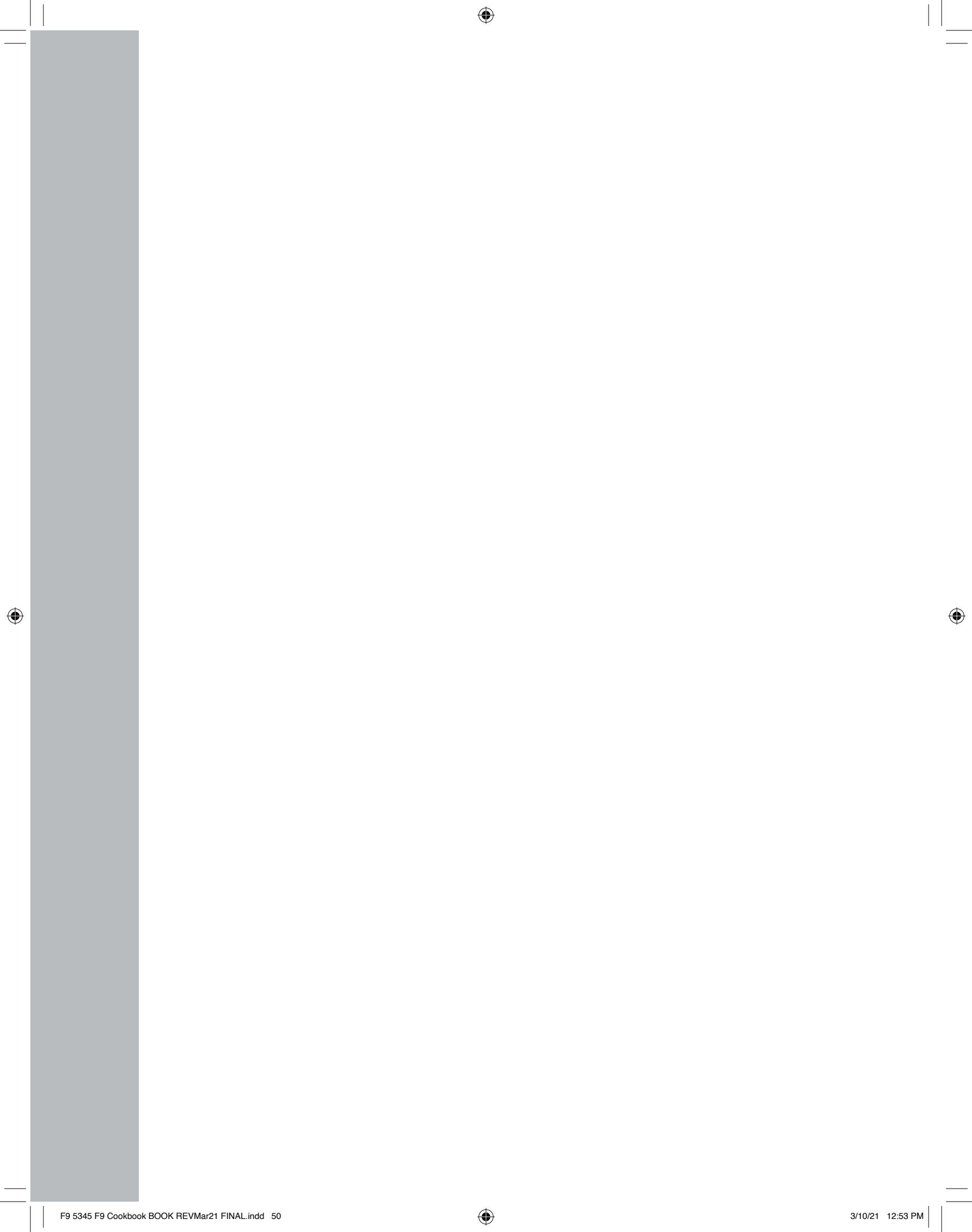
These surfaces can lighten or “bleach out” if product is too strong or left on for too long. Always do a test in an inconspicuous area to make sure Asphalt surface can handle the product in the dilution and process you intend to use on the rust stains.

DIRECTIONS:

1. Use a blower to remove large debris or a pressure washer to pre-clean any topical dirt, dust and other topical accumulations. Rust areas must be clean before application of F9 BARC.
2. Mist surface with water so it is damp and not puddling.
3. Apply 1-3 mist applications of F9 BARC at proper dilution rates depending on severity of rust.
4. Let dwell for 2-10 minutes. Light brushing is OK and will help to speed up process.
5. Rinse off product before surface dries.
6. Dry surface to check results. Repeat if necessary

BARC Process on Asphalt for Irrigation Rust Stains
 Power Wash Store
 Dallastown, PA





F9 Restoration Flow Chart for Vertical Stucco, Eifs, Dryvit, Vinyl, Hardiplank, Painted Metal and Other Painted Surfaces

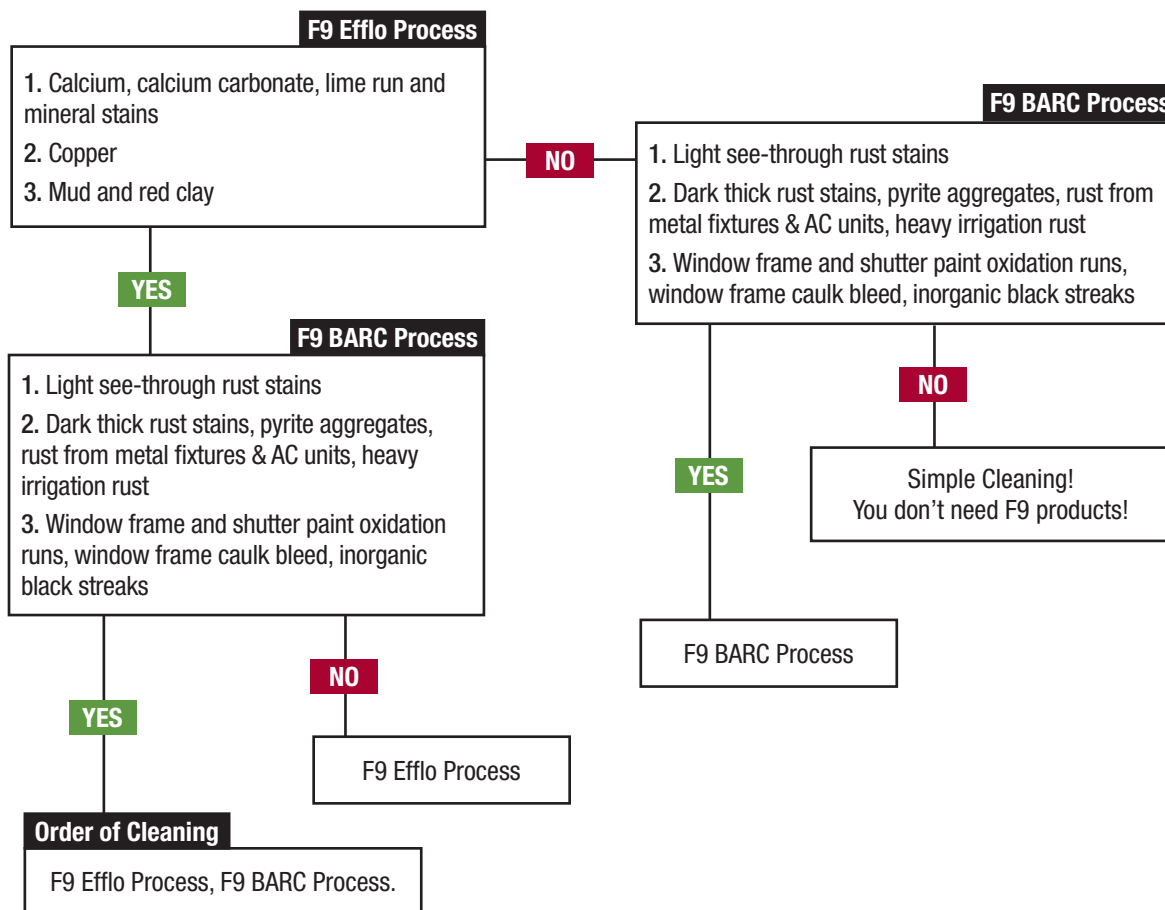
PRE CHECKS

ALWAYS CHECK FOR OXIDATION BEFORE PROCEEDING

PRE CLEANING

CLEAN ORGANIC STAINS
 Stains including mold, mildew, gloeocapsa magma first before proceeding to F9 Restoration Processes

STAIN IDENTIFICATION & PROCESS



CONFIDENTIAL

Copyright © 2018 Front 9 Restoration, Inc.

www.Front9Restoration.com | 855.803.1133



F9 COOKBOOK

PRECHECKS: How to Check for Oxidation

FOR: Stucco, Vertical Building Materials and Painted Surfaces.

DESCRIPTION: Oxidation occurs when heat and oxygen combine to break down the molecular structure of a material, such as paint. Oxidation can also occur on vinyl and other building materials, even concrete

DIRECTIONS:

It is important to do a check for oxidation on the surface you are going to be cleaning. Simply run your finger down the surface. If there is a chalky substance or residue on your finger, then the surface is most likely oxidized.

The problem with an oxidized surface is that it can be cleaned (oxidation removed) in the process of the cleaning the stain. If oxidation is removed, the new surface will be exposed underneath and look different than the area surrounding it.

If you have oxidation you should let your homeowner or property manager know. Get their input as to how to proceed. You should always do a test in an inconspicuous area to determine how much chemical and pressure the surface can handle and still blend into the areas that aren't oxidized.

This can be a tricky balance to restore or clean a stain and get it to blend into the background of an oxidized surface. Sometimes you can blend it, sometimes you can't. Your test, demo and customer feedback will tell you what to expect and what to do. You may get away with cleaning the stain and getting it to blend, or you may need to do much more of an area to get everything to look even.

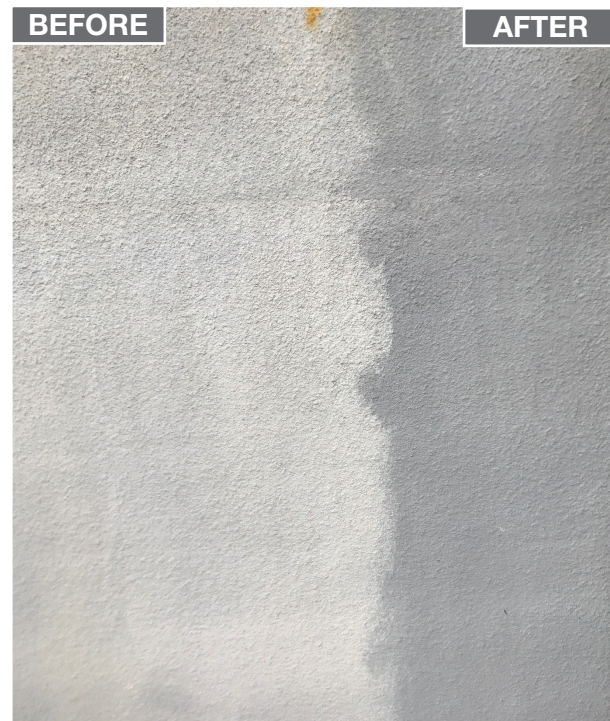
OXIDATION RESTORATION AND CLEANING:

If you want to clean oxidation, this is possible

1. Mist surface so it is damp.
2. Apply F9 BARC at 1:1, up to straight.
3. Dwell 1-3 minutes and brush with soft-bristled truck brush
4. Rinse off

Always test and demo your oxidation restoration before cleaning the whole project!

Some painted surfaces may be oxidized the entire depth of the painted surface.



Oxidation on Stucco
Left Side Before, Right Side after Being
Cleaned with F9 BARC

F9 Efflo Process #1 on Vertical Stucco, Eifs, Dryvit, Vinyl/Hardiplank, Painted Metal and Other Painted Surfaces

FOR: Calcium, Calcium Carbonate, Lime Run & Mineral Stains

PRODUCTS USED: F9 Efflorescence and Calcium Remover (F9 EFFLO) and F9 Double Eagle (to Neutralize).

PURPOSE:

› To remove calcium, calcium carbonate, lime run & mineral stains.

DILUTIONS:

8:1 to 1:1 for: Calcium, Calcium Carbonate, Lime Run and Mineral Stains. Start weak and work stronger if needed. A common dilution for this type of staining is 4:1.

CAUTION! Stronger than a 4:1 dilution can etch some stucco, eifs and dryvit surfaces, BUT heavy calcium buildup requires a strong dilution.

Always test to see what dilution will work without causing damage or etching.

DIRECTIONS:

1. Follow "Oxidation Prechecks" and clean organic stains first before proceeding to restoration treatments.
2. Always do a test and demo in an inconspicuous area to make sure the surface can handle the strength of cleaner you have made.
3. Mist surface with water.
4. Spray Efflo mix in an even spray from bottom of stain to top. Let dwell 2-8 minutes.
5. Agitation is usually ok with soft bristled nylon brush. Always test first to make sure surface can handle the agitation.
6. Spray Efflo mix on again, 30 second dwell time, agitate if needed.
7. Neutralize with 8:1 water to F9 Double Eagle.
8. Pressure Wash. Make sure to use only the pressure needed to clean and rinse, without causing damage to surface.
9. Repeat if needed.

F9 Efflo Process #2 on Vertical Stucco, Eifs, Dryvit, Vinyl/Hardiplank, Painted Metal and Other Painted Surfaces

FOR: Copper

PRODUCTS USED: F9 Efflorescence and Calcium Remover (F9 EFFLO) and F9 Double Eagle (to Neutralize).

PURPOSE:

> To remove copper stains.

DILUTIONS:

6:1 to 1:1 for: Copper Stains. Start weak and work stronger if needed. A common dilution for this type of staining is 4:1 to 2:1.

CAUTION: Stronger than a 4:1 dilution can etch some stucco, eifs and dryvit surfaces, BUT heavy copper staining requires a strong dilution.

Always test to see what dilution will work without causing damage or etching.



Efflo Process #2
Copper Stains on Stucco
Squeaky Dan's LLC
San Antonio, TX

DIRECTIONS:

1. Follow "Oxidation Prechecks" and clean organic stains first before proceeding to restoration treatments.
2. Always do a test and demo in an inconspicuous area to make sure the surface can handle the strength of cleaner you have made.
3. Mist surface with water.
4. Spray Efflo mix in an even spray from bottom of stain to top. Let dwell 2-6 minutes.
5. Agitation is usually ok with soft bristled nylon brush. Always test first to make sure surface can handle the agitation.
6. Spray Efflo mix on again, 30 second dwell time, agitate if needed.
7. Neutralize with 8:1 water to F9 Double Eagle.
8. Pressure Wash. Make sure to use only the pressure needed to clean and rinse, without causing damage to surface.
9. Repeat if needed.

F9 Efflo Process #3 on Vertical Stucco, Eifs, Dryvit, Vinyl/Hardiplank, Painted Metal and Other Painted Surfaces

FOR: Mud and Red Clay Stains

PRODUCTS USED: F9 Efflorescence and Calcium Remover (F9 EFFLO) and F9 Double Eagle (to Neutralize).

PURPOSE:

- › To remove mud and red clay stains.

DILUTIONS:

4:1 to 1:1 for: Mud Stains. Start weak and work stronger if needed.

8:1 to 1:1 for: Red Clay Stains. Start weak and work stronger if needed.

CAUTION: Stronger than a 4:1 dilution can etch some stucco, eifs and dryvit surfaces, BUT heavy mud staining requires a strong dilution.

Always test to see what dilution will work without causing damage or etching.



BEFORE

Efflo Process #3
Mud Stain on Stucco
A3 High Pressure Cleaning
Carson, CA



AFTER

DIRECTIONS:

1. Follow "Oxidation Prechecks" and clean organic stains first before proceeding to restoration treatments.
2. Always do a test and demo in an inconspicuous area to make sure the surface can handle the strength of cleaner you have made.
3. Mist surface with water.
4. Spray Efflo mix in an even spray from bottom of stain to top. Let dwell 1-6 minutes.
5. Agitation is usually ok with soft bristled nylon brush. Always test first to make sure surface can handle the agitation.
6. Spray Efflo mix on again, 30 second dwell time, agitate if needed.
7. Neutralize with 8:1 water to F9 Double Eagle.
8. Pressure Wash. Make sure to use only the pressure needed to clean and rinse, without causing damage to surface.
9. Repeat if needed.

ALTERNATE PRODUCT: If F9 Efflo doesn't work switch to **F9 BARC 1:1 to Straight**.

Spray on, dwell 2-10 minutes and pressure wash. Disregard steps 2-9 if you are using F9 BARC.

Notes: Depending on the surface and how long the mud or red clay stain has been there, it may not be possible to completely remove the mud stain. Stucco surfaces, for instance can be very porous. When the surface gets wet it can suck the stain very deep. When the surface dries, it can lock in the stain.

F9 BARC Process #1 on Vertical Stucco, Eifs, Dryvit, Vinyl/Hardiplank, Painted Metal and Other Painted Surfaces

FOR: Light See-Through Rust Stains

PRODUCTS USED: F9 BARC

PURPOSE:

› To remove light (see-through) rust stains from irrigation, metal fixtures and other sources.

DILUTIONS:

3:1 to 1:1 (Water to F9 BARC)

DIRECTIONS:

1. Follow "Oxidation Prechecks" and clean organic stains first before proceeding to restoration treatments.
2. Spray F9 mix onto siding using a mist spray, 1-3x over a period of 2-15 minutes. Don't let product dry and rinse off before it dries. Light agitation is ok with a soft bristled brush. Repeat if needed.

Note: The stronger you make your mix, the faster the rust removal process will go. But, if there is oxidation you will remove more of it with a stronger mix.



F9 BARC Process #1 on Hardiplank
Premier Power Washers, LLC
St. Augustine, FL



F9 BARC Process #2 on Vertical Stucco, Eifs, Dryvit, Vinyl/Hardiplank, Painted Metal and Other Painted Surfaces

FOR: Dark Thick Rust Stains, Pyrite Aggregates, Rust from Metal Fixtures, AC Units and Heavy Irrigation Rust.

PRODUCTS USED: F9 BARC

PURPOSE:

- To remove heavy rust stains from irrigation stains, pyrite aggregates, metal fixtures, AC units and other sources.

DILUTIONS:

1:1 to Straight: (Water to F9 BARC)

DIRECTIONS:

1. Follow “Oxidation Prechecks” and clean organic stains first before proceeding to restoration treatments.
2. Spray F9 mix onto surface using a mist spray, 1-3x over a period of 2-15 minutes. Don’t let product dry and rinse off before it dries. Light agitation is ok with a soft bristled brush. Repeat if needed.

Note: Dark rust generally takes a stronger mix to clean. If the rust is from direct contact of a metal fixture or pyrite aggregate, **you may need to use an 8:1 to 2:1 mix of water to F9 Efflo** to “cut” into the metal oxides and metallic minerals that have combined with the rust. If this is the case, spray the solution of water to F9 Efflo and agitate. Rinse off and continue with the F9 BARC Process at recommended dilutions above.

CAUTION: If you need to use F9 Efflo to cut into mineral oxides or pyrite, be careful using on these building surfaces at strong dilutions > 4:1 as the surface may start to etch.

Note on Pyrite Aggregates: Pyrite aggregates are small iron aggregates that can make their way into the mix of stucco. They produce tiny, pinhole rust areas with streaks of rust below it.



F9 BARC Process #2
 Irrigation Rust on Stucco
 The Roof Wizard, LLC
 Hammonton, NJ

F9 BARC Process #3 on Vertical Stucco, Eifs, Dryvit, Vinyl/Hardiplank, Painted Metal and Other Painted Surfaces

FOR: Window Frame Paint Oxidation Runs, Window Frame Caulk Bleed, Inorganic Black Streaks (not from mold or algae).

PRODUCTS USED: F9 BARC or F9 Efflo. F9 Double Eagle to Neutralize if necessary.

DILUTIONS:

1:2 to Straight: (Water to F9 BARC)

PURPOSE:

- › To remove streaking from window frame paint oxidation, caulk bleed and to remove inorganic metallic black streaking on siding.

DIRECTIONS:

1. Follow "Oxidation Prechecks" and clean organic stains first before proceeding to restoration treatments.
2. Spray F9 mix onto surface using a mist spray, 1-2 times over a period of just ONE MINUTE. Pressure Wash. Repeat if needed.
3. **If F9 BARC Does Not Work: Switch over to a 4:1 mix of Water to F9 Efflo.** Spray on dwell 1-4 minutes, scrub and pressure wash. Use an 8:1 Double Eagle mix to neutralize before pressure washing if grass or masonry surface is directly below where you are working.

Note on Directions for #3: If you are working on an area with grass, concrete or any masonry surface directly below where you are cleaning, you should also spray an 8:1 Double Eagle mix on the concrete to help neutralize any F9 Efflo mix that gets on it. Rinse flatwork as well if Efflo mix gets on it.



CleanAndGreenSolutions.com
Call/Text 2818838470

F9 BARC Process #3
Inorganic Black Streaks on Stucco
Clean and Green Solutions
Houston, TX

F9 Restoration Flow Chart for Vertical Porous & Dense Brick/Block/Concrete

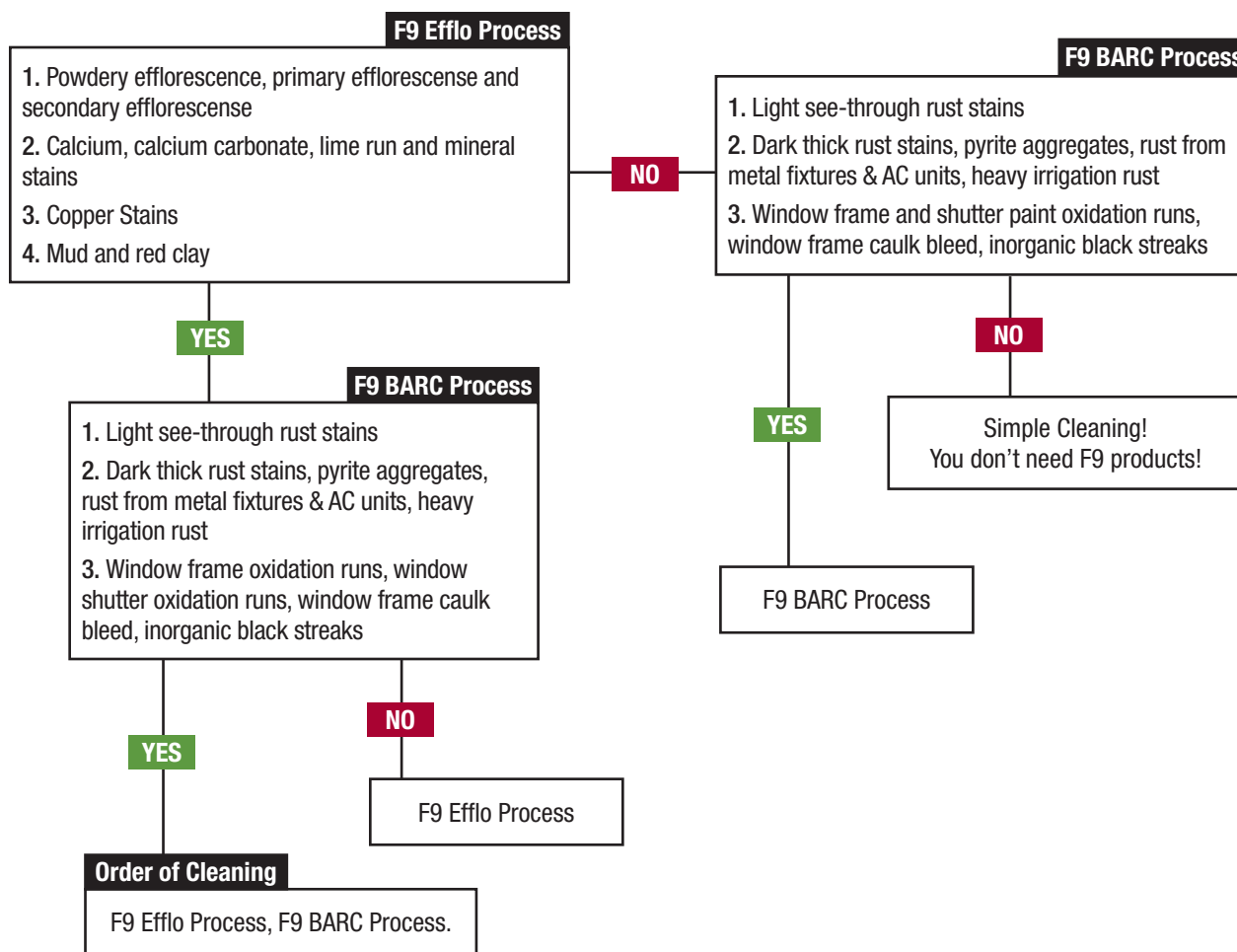
PRE CHECKS

ALWAYS CHECK FOR OXIDATION BEFORE PROCEEDING

PRE CLEANING

CLEAN ORGANIC STAINS
Stains including mold, mildew, gloeocapsa magma first before proceeding to F9 Restoration Processes

STAIN IDENTIFICATION & PROCESS



CONFIDENTIAL

Copyright © 2018 Front 9 Restoration, Inc.

www.Front9Restoration.com | 855.803.1133



F9 COOKBOOK

F9 Efflo Process #1 on Vertical Porous and Dense Brick, Block and Concrete

FOR: Powdery Efflorescence, Primary Efflorescence and Secondary Efflorescence.

PRODUCTS USED: F9 Efflorescence and Calcium Remover (F9 EFFLO).

PURPOSE:

- › To remove all stages of efflorescence.

DILUTIONS:

10:1 for: Efflorescence

DIRECTIONS:

1. Dry brush surface and remove any powdery efflorescence.
2. Lightly mist surface with water.
3. Spray F9 Efflo mix in an even spray from bottom of stain to top. Let dwell 10 minutes.
4. Agitation is usually ok with soft bristled nylon brush. Always test first to make sure surface can handle the agitation.
5. Spray Efflo mix on again, 30 second dwell time, agitate if needed.
6. Pressure Wash. Make sure to use only the pressure needed to clean and rinse, without causing damage to surface.
7. Repeat if needed.



Efflo Process #1
Powdery Efflorescence
Clean and Green Solutions
Houston, TX



BEFORE

AFTER

CAUTION: Depending on where the brick or block is in its efflorescing cycle, in some instances cleaning the topical salts off may result in even more efflorescence. Always do a test and demo allowing some time (a few days) see if the efflorescence is going to come back. Sealing may be necessary to slow down moisture migration. Call customer service for sealing advice.

Note: Bricks and Blocks vary greatly in their compressive strengths, density and ability to handle certain cleaners. Some are porous, some are dense, some are made from concrete (usually more porous/weaker), some from clay (usually more dense/hard) and some are made from a blend of ceramic material (very dense and strong).

The harder the brick or block is, the more product it can handle and at stronger dilutions/strengths. The stronger and harder the brick or block is, the easier your cleaning will go and with less worry as to color degradation or possible etching.

Concrete structures can also vary greatly in strengths and ability to handle certain cleaners.

Always do a test and demo in an inconspicuous area to determine your process, dilution and application. A simple test will help to see what exactly can be done, will set customer expectations and you will know how to proceed with bidding and chemical usage.



Efflo Process #1
Powdery Efflorescence

F9 Efflo Process #2 on Vertical Porous and Dense Brick, Block and Concrete

FOR: Calcium, Calcium Carbonate, Lime Run and Mineral Stains

PRODUCTS USED: F9 Efflorescence and Calcium Remover (F9 EFFLO). F9 Double Eagle for neutralizing if necessary.

PURPOSE:

› To remove calcium related issues, lime run and mineral stains.

DILUTIONS:

4:1 to Straight for all staining above.

DIRECTIONS:

1. If surface is badly stained, do not mist with water before application of F9 Efflo mix. If surface is only lightly stained, mist with water before application of F9 Efflo mix.
2. Spray F9 Efflo mix in an even spray from bottom of stain to top. Let dwell 6-10 minutes.
3. Spray F9 Efflo again and let dwell 30 seconds to 2 minutes. Don't let dry.
4. Brush and agitate with stiff nylon truck or deck brush.
5. Neutralize with 8:1 water to F9 Double Eagle.
6. Pressure Wash.
7. Repeat if needed.
8. If after 5-6 applications of repeating the process and stains don't budge using straight F9 Efflo, you have calcite and will need to be media blasted.



Efflo Process #2
Integrity Exterior Cleaning
Fulshear, TX

Notes: Soft brick and block like split face block will be some of the toughest surfaces to work on. The open pore channels of this surface wicks water and minerals deep into the brick. Bricks and Blocks vary greatly in their compressive strengths, density and ability to handle certain cleaners. Some are porous, some are dense, some are made from concrete (usually more porous/weaker), some from clay (usually more dense/harder) and some are made from a blend of ceramic material (very dense and strong).

The harder the brick or block is, the more product it can handle and at stronger dilutions/strengths. The stronger and harder the brick or block is, the easier your cleaning will go and with less worry as to color degradation or possible etching.

Vertical concrete structures can also vary greatly in strengths and ability to handle certain cleaners.

Before bidding: You should always perform a simple test and demo on any vertical surface with these types of stains. You will only know what you are into if you do a simple 15 minute test and demo. Your testing will help to determine process, dilution, application and set your and your customer expectations.

CAUTION: If you are working on an area with grass, concrete or any masonry surface directly below where you are cleaning, **you should spray an 8:1 Double Eagle** mix on the area below to help neutralize any F9 Efflo mix that gets on it. Rinse flatwork as well if Efflo mix gets on it. Rinse grass if Efflo mix gets on it. Any time you are using F9 Efflo at strengths of 4:1 or stronger you should be cautious of the areas around where you are cleaning.



Efflo Process #2
Calcium Carbonate and Lime Run on Porous Brick
Patriot Services
Bedford, TX

F9 Efflo Process #3 on Vertical Porous and Dense Brick, Block and Concrete

FOR: Copper Stains

PRODUCTS USED: F9 Efflorescence and Calcium Remover (F9 EFFLO). F9 Double Eagle for neutralizing if necessary.

PURPOSE:

- › To remove green copper staining.

DILUTIONS:

4:1 to Straight

DIRECTIONS:

1. If surface is badly stained, do not mist with water before application of F9 Efflo mix. If surface is only lightly stained, mist with water before application of F9 Efflo mix.
2. Spray F9 Efflo mix in an even spray from bottom of stain to top. Let dwell 2-5 minutes.
3. Spray F9 Efflo again and let dwell 30 seconds to 2 minutes. Don't let dry.
4. Brush and agitate with stiff nylon truck or deck brush.
5. Neutralize with 8:1 water to F9 Double Eagle.
6. Pressure Wash.
7. Repeat if needed.



F9 Efflo Process #3
On Point Exterior Services
St. Mary's County, MD

Notes: Bricks and Blocks vary greatly in their compressive strengths, density and ability to handle certain cleaners. Some are porous, some are dense, some are made from concrete (usually more porous/weaker), some from clay (usually more dense/harder) and some are made from a blend of ceramic material (very dense and strong).

The harder the brick or block is, the more product it can handle and at stronger dilutions/strengths. The stronger and harder the brick or block is, the easier your cleaning will go and with less worry as to color degradation or possible etching.

Vertical concrete structures can also vary greatly in strengths and ability to handle certain cleaners.

Before bidding: You should always perform a simple test and demo on any vertical surface with these types of stains. You will only know what you are into if you do a simple 10 minute test and demo. Your testing will help to determine process, dilution, application and set your and your customer expectations. You will also know if you will need to be careful of etching the surface. Most surfaces can handle F9 Efflo but at strong dilutions always be cautious of possible etching.

CAUTION: If you are working on an area with grass, concrete or any masonry surface directly below where you are cleaning, **you should spray an 8:1 Double Eagle** mix on the area below to help neutralize any F9 Efflo mix that gets on it. Rinse flatwork as well if Efflo mix gets on it. Rinse grass if Efflo mix gets on it. Any time you are using F9 Efflo at strengths of 4:1 or stronger you should be cautious of the areas around where you are cleaning.

F9 Efflo Process #4 on Vertical Porous and Dense Brick, Block and Concrete

FOR: Mud and Red Clay Stains

PRODUCTS USED: F9 Efflorescence and Calcium Remover (F9 EFFLO). F9 Double Eagle for neutralizing if necessary.

PURPOSE:

1. To remove mud and red clay stains.

DILUTIONS:

4:1 to Straight for: Mud Stains

10:1 to 2:1 for: Red Clay Stains

DIRECTIONS:

2. If surface is badly stained, do not mist with water before application of F9 Efflo mix. If surface is only lightly stained, mist with water before application of F9 Efflo mix.
3. Spray F9 Efflo mix in an even spray from bottom of stain to top. Let dwell 2-5 minutes. Don't let dry and scrub. If stains look like they are still going to be there, proceed to #2. If not, proceed to #5.
4. Spray F9 Efflo again and let dwell 30 seconds to 2 minutes. Don't let dry.
5. Brush and agitate with stiff nylon truck or deck brush.
6. Neutralize with 8:1 water to F9 Double Eagle.
7. Pressure Wash.
8. Repeat if needed.

Notes: Bricks and Blocks vary greatly in their compressive strengths, density and ability to handle certain cleaners. Some are porous, some are dense, some are made from concrete (usually more porous/weaker), some from clay (usually more dense/hard) and some are made from a blend of ceramic material (very dense and strong).

The harder the brick or block is, the more product it can handle and at stronger dilutions/strengths. The stronger and harder the brick or block is, the easier your cleaning will go and with less worry as to color degradation or possible etching.

Vertical concrete structures can also vary greatly in strengths and ability to handle certain cleaners.

Before bidding: You should always perform a simple test and demo on any vertical surface with these types of stains. You will only know what you are into if you do a simple 10 minute test and demo. Your testing will help to determine process, dilution, application and set your and your customer expectations. You will also know if you will need to be careful of etching the surface or color fade. Most surfaces can handle F9 Efflo but at strong dilutions always be cautious of possible etching.

CAUTION: If you are working on an area with grass, concrete or any masonry surface directly below where you are cleaning, **you should spray an 8:1 Double Eagle** mix on the area below to help neutralize any F9 Efflo mix that gets on it. Rinse flatwork as well if Efflo mix gets on it. Rinse grass if Efflo mix gets on it. Any time you are using F9 Efflo at strengths of 4:1 or stronger you should be cautious of the areas around where you are cleaning.

F9 BARC Process #1 on Vertical Porous and Dense Brick, Block and Concrete

FOR: Light See-Through Rust Stains

PRODUCTS USED: F9 BARC

PURPOSE:

› To remove light (see-through) rust stains from irrigation, metal fixtures and other sources.

DILUTIONS:

2:1 to 1:1 Water to F9 BARC

DIRECTIONS:

1. Spray F9 mix onto surface using a mist spray, 1-3x over a period of 2-15 minutes.
2. Don't let product dry. Light agitation is ok with a soft bristled brush.
3. Rinse off before it dries.
4. Repeat if needed.

Note: The stronger you make your mix, the faster the rust removal process will go but if too strong on soft bricks and block you may begin to pull out the color. See "Caution" below.

CAUTION: Always do a test in an inconspicuous area. Some bricks and block are colored after the fact or may contain iron oxide pigment which can be removed using F9 BARC. On concrete structures it's important to do a test as the substrate will brighten when it dries. Make sure to fan product out to help with blending.



Process #1 Light See Through Rust Stains
R.L. Grassel Pressure Washing LLC
Lawrenceville, VA



F9 BARC Process #2 on Vertical Porous and Dense Brick, Block and Concrete

FOR: Dark Thick Rust Stains, Pyrite Aggregates, Rust from Metal Fixtures, AC Units and Heavy Irrigation Rust.

PRODUCTS USED: F9 BARC

PURPOSE:

- › To remove heavy rust stains from irrigation stains, pyrite aggregates, metal fixtures, AC units and other sources.

DILUTIONS:

1:1 to Straight: (Water to F9 BARC)

DIRECTIONS:

1. Spray F9 mix onto surface using a mist spray, 1-3x over a period of 2-10 minutes.
2. Don't let product dry. Agitation may be necessary with a soft or stiff bristled brush.
3. Rinse off before it dries.
4. Repeat if needed.



BEFORE

BARC Process #2 on Porous and Dense Brick, Block and Concrete for Heavy Runs Of Irrigation Stains. Pressure H2O Roof & Exterior Cleaning Spring Lake, NJ



AFTER

Note: Dark rust generally takes a stronger mix to clean. If the rust is from direct contact of a metal fixture or pyrite aggregate, you may need to use an 8:1 to 2:1 mix of water to F9 Efflo to “cut” into the metal oxides and metallic minerals that have combined with the rust. If this is the case, spray the solution of water to F9 Efflo and agitate. If you need to use F9 Efflo at dilutions stronger than 4:1 to cut into the dark red or black minerals in the rust, you should use an 8:1 mix of water to F9 Double Eagle to neutralize the area before pressure washing off or rinsing. After rinsing, continue with the F9 BARC Process at recommended dilutions above.

CAUTION: If you need to use F9 Efflo to cut into mineral oxides or pyrite, be careful using on these building surfaces at strong dilutions > 4:1 as the surface may start to etch. Soft brick and block can etch much more quickly than harder brick and block.

Bricks and Blocks vary greatly in their compressive strengths, density and ability to handle certain cleaners. Some are porous, some are dense, some are made from concrete (usually more porous/weaker), some from clay (usually more dense/harder) and some are made from a blend of ceramic material (very dense and strong).

The harder the brick or block is, the more product it can handle and at stronger dilutions/strengths. The stronger and harder the brick or block is, the easier your cleaning will go and with less worry as to color degradation or possible etching.

Always test concrete to make sure you can perform the F9 treatments without the concrete brightening up too much. F9 BARC will brighten concrete upon drying. Along with a test, you can also fan the product out a few feet beyond the rust stain to help with blending.

Always do a test and demo in an inconspicuous area to determine your process, dilution and application. A simple test will help to see what exactly can be done, will set customer expectations and you will know how to proceed with bidding and chemical usage.

Note on Pyrite Aggregates: Pyrite aggregates are small iron aggregates that can make their way into the mix. They can produce tiny or large pinholes or holes with rust leaking out. These rust-producing aggregates will continue to leach iron out from the building substrate unless the source point of moisture is stopped by a sealer.



BARC Process #2 on Concrete
Mighty Mobile Power Wash
Lake Havasu, AZ

F9 BARC Process #3 on Vertical Porous and Dense Brick, Block and Concrete

FOR: Window Frame Paint Oxidation Runs, Window Frame Caulk Bleed, Inorganic Black Streaks (not from mold or algae).

PRODUCTS USED: F9 BARC

PURPOSE:

- › To remove streaking from window frame paint oxidation, caulk bleed and to remove inorganic metallic black streaking on siding.

DILUTIONS:

Use Straight

DIRECTIONS:

1. Spray F9 mix onto surface using a mist spray, 1-2 times over a period of just ONE MINUTE. Pressure Wash. Repeat if needed.
2. **If F9 BARC Does Not Work:** Switch over to a 4:1 mix of Water to F9 Efflo. Spray on dwell 1 minute, scrub immediately and pressure wash. Be cautious of etching. Use an 8:1 Double Eagle mix to neutralize before pressure washing if grass or masonry surface is directly below where you are working.
3. If using F9 Efflo in #2 does not work, make stronger but be careful of etching surface.

Note on Directions: If you are working on an area with grass, concrete or any masonry surface directly below where you are cleaning, you should also spray an 8:1 Double Eagle mix on the concrete to help neutralize any F9 Efflo mix that gets on it. Rinse flatwork right away if Efflo mix gets on it.



BARC Process #3 for Window
Frame Paint Oxidation Runs
The Roof Wizard, LLC
Hammonton, NJ

F9 Restoration Flow Chart for Vertical Porous and Dense Tile/Stone

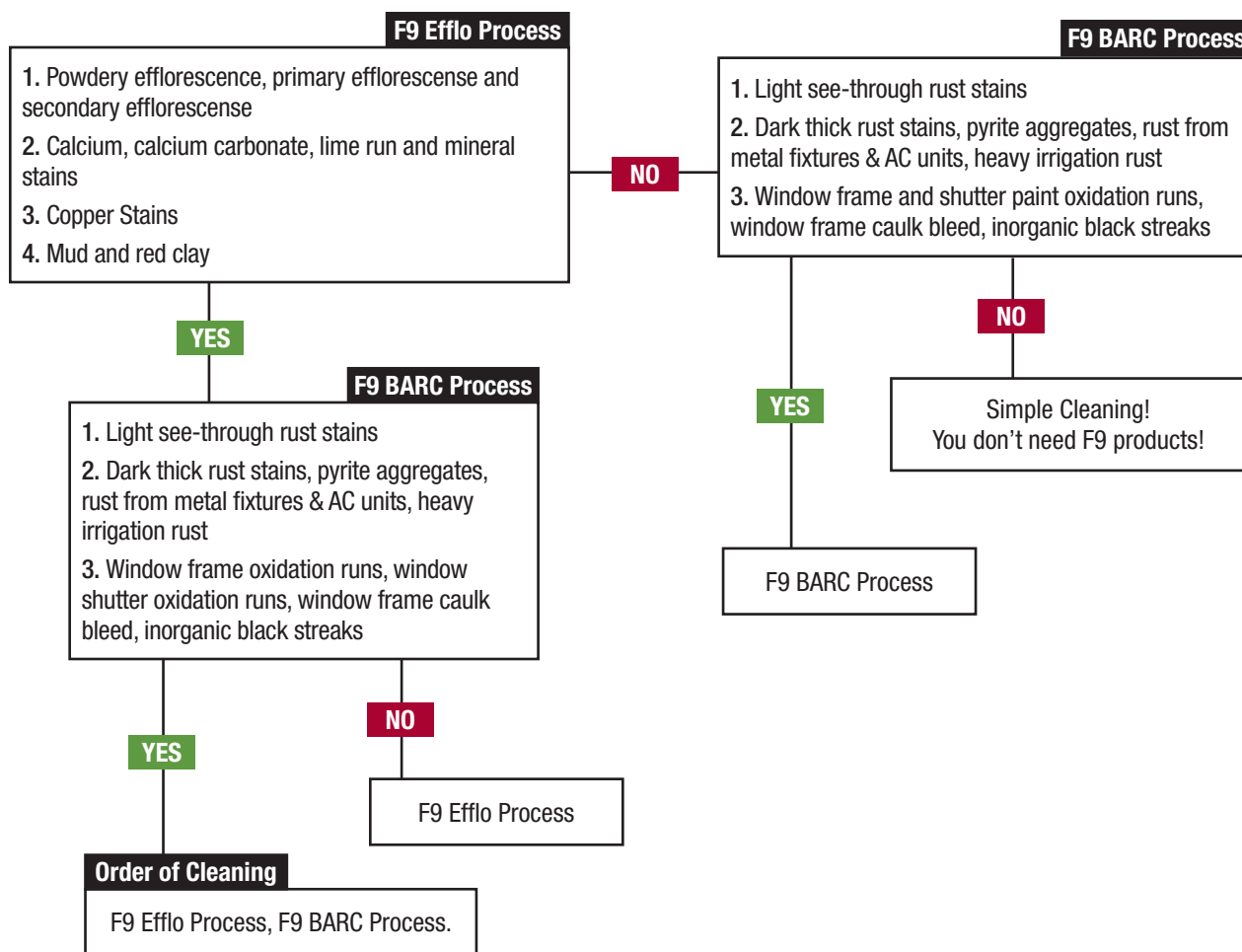
PRE CHECKS

ALWAYS CHECK FOR OXIDATION BEFORE PROCEEDING

PRE CLEANING

CLEAN ORGANIC STAINS
Stains including mold, mildew, gloeocapsa magma first before proceeding to F9 Restoration Processes

STAIN IDENTIFICATION & PROCESS



CONFIDENTIAL

Copyright © 2018 Front 9 Restoration, Inc.

www.Front9Restoration.com | 855.803.1133



F9 COOKBOOK

F9 Efflo Process #1 on Vertical Porous and Dense Tile and Stone

FOR: Powdery Efflorescence, Primary Efflorescence and Secondary Efflorescence.

PRODUCTS USED: F9 Efflorescence and Calcium Remover (F9 EFFLO).

PURPOSE:

- › To remove all stages of efflorescence.

DILUTIONS:

10:1 for: Efflorescence. Make stronger if needed.

DIRECTIONS:

1. Dry brush surface and remove any powdery efflorescence.
2. Lightly mist surface with water.
3. Spray F9 Efflo mix in an even spray from bottom of stain to top. Let dwell 10 minutes.
4. Agitation is usually ok with soft bristled nylon brush. Always test first to make sure surface can handle the agitation. The softer the surface the more gently you will need to be.
5. Spray Efflo mix on again, 30 second dwell time, agitate if needed.
6. Pressure Wash. Make sure to use only the pressure needed to clean and rinse, without causing damage to surface.
7. Repeat if needed.



Efflo Process #1
on Porous and Dense Tile Stone for Efflorescence
Dave Miller, TX



CAUTION: Depending on where the tile or stone is in its efflorescing cycle, in some instances cleaning the topical salts off may result in even more efflorescence. Always do a test and demo allowing some time (a few days) see if the efflorescence is going to come back. Sealing may be necessary to slow down moisture migration. Call customer service for sealing advice.

Note: Tile and Stone vary greatly in their compressive strengths, density and ability to handle certain cleaners. Some are porous, some are dense, some are weak and some are strong.

The harder the Tile or Stone is, the more product it can handle and at stronger dilutions/strengths. The stronger and harder the tile or stone is, the easier your cleaning will go and with less worry as to color degradation or possible etching.

Always do a test and demo in an inconspicuous area to determine your process, dilution and application. A simple test will help to see what exactly can be done, will set customer expectations and you will know how to proceed with bidding and chemical usage.

F9 Efflo Process #2 on Vertical Porous and Dense Tile and Stone

FOR: Calcium, Calcium Carbonate, Lime Run and Mineral Stains

PRODUCTS USED METHOD (A): F9 Efflorescence and Calcium Remover (F9 EFFLO).
F9 Double Eagle for neutralizing if necessary.

PRODUCTS USED METHOD (B): F9 BARC

PURPOSE: METHOD (A)

› To remove calcium related issues, lime run and mineral stains.

DILUTIONS:

4:1 to Straight (Water to F9 Efflo)

DIRECTIONS:

1. If surface is badly stained, do not mist with water before application of F9 Efflo mix. If surface is only lightly stained, mist with water before application of F9 Efflo mix.
2. Spray F9 Efflo mix in an even spray from bottom of stain to top. Let dwell 2-10 minutes.
3. Spray F9 Efflo again and let dwell 30 seconds to 2 minutes. Don't let dry.
4. Brush and agitate with stiff nylon truck or deck brush.
5. Neutralize with 8:1 water to F9 Double Eagle.
6. Pressure Wash.
7. Repeat if needed.
8. If after 5-6 applications of repeating the process and stains don't budge you have calcite and will need to be media blasted.



METHOD (A)
Chart 7 Efflo Process #2 on Tile
Poseidon Pressure Cleaning
Queensland, Australia

Notes: Soft tile like certain flagstones will be some of the toughest surfaces to work on. The open pore channels of this surface wicks water and minerals deep into the substrate. You will have to dilute product on soft building materials to create a good balance between getting it clean without etching the surface.

Tile and Stone vary greatly in their compressive strengths, density and ability to handle certain cleaners. Some are porous, some are dense, some are weak and some are strong.

The harder the Tile or Stone is, the more product it can handle and at stronger dilutions/strengths. The stronger and harder the tile or stone is, the easier your cleaning will go and with less worry as to color degradation or possible etching.

The less dense the Tile or Stone is, the more it is prone to etching, flaking or degrading. Be extra cautious on soft tile and stone surfaces not to make Efflo mix too strong for the surface.

Always do a test and demo in an inconspicuous area to determine your process, dilution and application. A simple test will help to see what exactly can be done, will set customer expectations and you will know how to proceed with bidding and chemical usage.

Before bidding: You should always perform a simple test and demo on any vertical surface with these types of stains. You will only know what you are into if you do a simple 15 minute test and demo. Your testing will help to determine process, dilution, application and set your and your customer expectations.

CAUTION: If you are working on an area with grass, concrete or any masonry surface directly below where you are cleaning, **you should spray an 8:1 Double Eagle** mix on the area below to help neutralize any F9 Efflo mix that gets on it. Rinse flatwork as well if Efflo mix gets on it. Rinse grass if Efflo mix gets on it. Any time you are using F9 Efflo at strengths of 4:1 or stronger you should be cautious of the areas around where you are cleaning.

PURPOSE: METHOD (B)

> For thin, hard water spot removal.

DILUTIONS:

2:1 to Straight (Water to F9 BARC)

DIRECTIONS:

1. Pre wet surface.
2. Spray F9 BARC mix at 2:1.
3. Let dwell 3-6 minutes. Don't let dry.
4. Scrub with 0000 steel wool and rinse.

CAUTION! Polished tile and stone can dull when using F9 BARC. Make sure to test. Re-polishing may be needed.



METHOD (B)
Efflo Process #2
Hard Water Stains on
Granite Before
DC Dynamic Cleaning
Palm Desert, CA

F9 Efflo Process #3 on Vertical Porous and Dense Tile and Stone

FOR: Copper Stains

PRODUCTS USED: F9 Efflorescence and Calcium Remover (F9 EFFLO). F9 Double Eagle for neutralizing if necessary.

PURPOSE:

- › To remove green copper staining.

DILUTIONS:

4:1 to Straight

DIRECTIONS:

1. Spray F9 Efflo mix in an even spray from bottom of stain to top. Let dwell 2-5 minutes.
2. Spray F9 Efflo again and let dwell 30 seconds to 2 minutes. Don't let dry.
3. Brush and agitate with stiff nylon truck or deck brush.
4. Neutralize with 8:1 water to F9 Double Eagle.
5. Pressure Wash.
6. Repeat if needed.

ALTERNATE DIRECTIONS:

F9 EFFLO DOESN'T WORK

1. Spray 4:1 to 1:1 water to F9 BARC mix
2. Let dwell 1-4 minutes and powerwash

Notes: Soft tile and stone like certain flagstones and limestone will be some of the toughest surfaces to work on. The open pore channels of these surfaces can wick copper stains deep into the surface. You may have to dilute product down to create a balance between getting it clean without etching the surface.

Tile and Stone vary greatly in their compressive strengths, density and ability to handle certain cleaners. Some are porous, some are dense, some are weak and some are strong.

The harder the Tile or Stone is, the more product it can handle and at stronger dilutions/strengths. The stronger and harder the tile or stone is, the easier your cleaning will go and with less worry as to color degradation or possible etching.

The less dense the Tile or Stone is, the more it is prone to etching, flaking or degrading. Be extra cautious on soft tile and stone surfaces not to make Efflo mix too strong for the surface.

Always do a test and demo in an inconspicuous area to determine your process, dilution and application. A simple test will help to see what exactly can be done, will set customer expectations and you will know how to proceed with bidding and chemical usage.

Before bidding: You should always perform a simple test and demo on any vertical surface with these types of stains. You will only know what you are into if you do a simple 10 minute test and demo. Your testing will help to determine process, dilution, application and set your and your customer expectations. You will also know if you will need to be careful of etching the surface. Most surfaces can handle F9 Efflo but at strong dilutions always be cautious of possible etching.

CAUTION: If you are working on an area with grass, concrete or any masonry surface directly below where you are cleaning, **you should spray an 8:1 Double Eagle** mix on the area below to help neutralize any F9 Efflo mix that gets on it. Rinse flatwork as well if Efflo mix gets on it. Rinse grass if Efflo mix gets on it. Any time you are using F9 Efflo at strengths of 4:1 or stronger you should be cautious of the areas around where you are cleaning.

F9 Efflo Process #4 on Vertical Porous and Dense Tile and Stone

FOR: Mud and Red Clay Stains

PRODUCTS USED: F9 Efflorescence and Calcium Remover (F9 EFFLO). F9 Double Eagle for neutralizing if necessary.

PURPOSE:

- › To remove mud and red clay stains.

DILUTIONS:

8:1 to Straight for: Mud Stains

10:1 to 1:1 for: Red Clay Stains

DIRECTIONS:

1. Mist with water before application of F9 Efflo mix.
2. Spray F9 Efflo mix in an even spray from bottom of stain to top. Let dwell 2-6 minutes. Don't let product dry and scrub. If stains look like they are still going to be there, proceed to #3. If not, proceed to #5.
3. Spray F9 Efflo again and let dwell 30 seconds to 2 minutes. Don't let dry.
4. Brush and agitate with stiff nylon truck or deck brush.
5. Neutralize with 8:1 water to F9 Double Eagle.
6. Pressure Wash.
7. Repeat if needed.

Notes: Soft tile and stone like certain flagstones and limestone will be some of the toughest surfaces to work on. The open pore channels of this surface can wick stains deep into the surface. Soft surfaces can degrade, chip or crumble much faster than harder surfaces. Use care and caution on these surfaces and make product more weak if needed so you don't etch.

Tile and Stone vary greatly in their compressive strengths, density and ability to handle certain cleaners. Some are porous, some are dense, some are weak and some are strong.

The harder the Tile or Stone is, the more product it can handle and at stronger dilutions/strengths. The stronger and harder the tile or stone is, the easier your cleaning will go and with less worry as to color degradation or possible etching.

The less dense the Tile or Stone is, the more it is prone to etching, flaking or degrading. Be extra cautious on soft tile and stone surfaces not to make Efflo mix too strong for the surface.

Always do a test and demo in an inconspicuous area to determine your process, dilution and application. A simple test will help to see what exactly can be done, will set customer expectations and you will know how to proceed with bidding and chemical usage.

Before bidding: You should always perform a simple test and demo on any vertical surface with these types of stains. You will only know what you are into if you do a simple 10 minute test and demo. Your testing will help to determine process, dilution, application and set your and your customer expectations. You will also know if you will need to be careful of etching the surface. Most surfaces can handle F9 Efflo but at strong dilutions always be cautious of possible etching.

CAUTION: If you are working on an area with grass, concrete or any masonry surface directly below where you are cleaning, **you should spray an 8:1 Double Eagle** mix on the area below to help neutralize any F9 Efflo mix that gets on it. Rinse flatwork as well if Efflo mix gets on it. Rinse grass if Efflo mix gets on it. Any time you are using F9 Efflo at strengths of 4:1 or stronger you should be cautious of the areas around where you are cleaning.



Efflo Process #4
Mud on Stone
Peach State Softwash
Dallas, GA

F9 BARC Process #1 on Vertical Porous and Dense Tile and Stone

FOR: Light See-Through Rust Stains

PRODUCTS USED: F9 BARC

PURPOSE:

› To remove light (see-through) rust stains from irrigation, metal fixtures and other sources.

DILUTIONS:

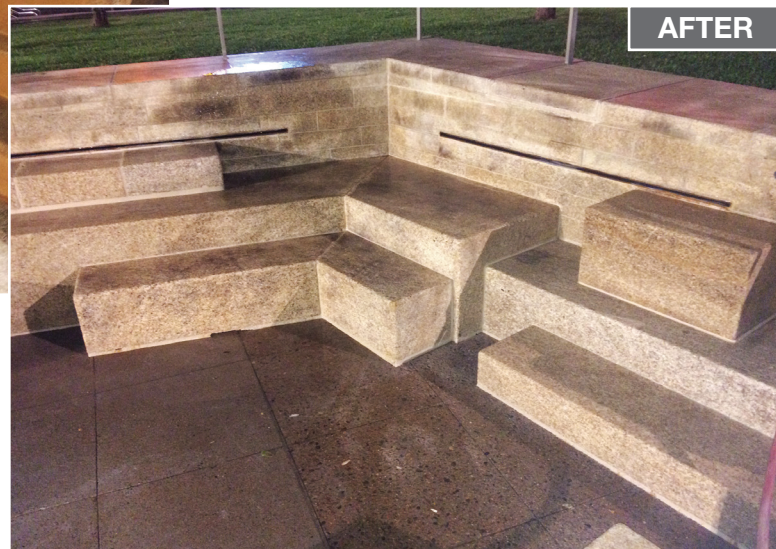
3:1 to 2:1 Water to F9 BARC

DIRECTIONS:

1. Spray F9 mix onto surface using a mist spray, 1-3x over a period of 2-10 minutes.
2. Don't let product dry. Light agitation is ok with a soft bristled brush.
3. Rinse off before it dries.
4. Repeat if needed.



BARC Process #1
Pro Powerwash
Phoenix, AZ



Note: The stronger you make your mix, the faster the rust removal process will go but if too strong on soft tile and stone you may begin to pull out the color. See “Caution” below.

CAUTION: Tile and Stone vary greatly in their compressive strengths, density and ability to handle certain cleaners. Some are porous, some are dense, some are weak and some are strong.

The harder the Tile or Stone is, the more product it can handle and at stronger dilutions/strengths. The stronger and harder the tile or stone is, the easier your cleaning will go and with less worry as to color degradation or possible etching.

Always do a test and demo in an inconspicuous area to determine your process, dilution and application. A simple test will help to see what exactly can be done, will set customer expectations and you will know how to proceed with bidding and chemical usage.

BARC Process #1



BARC Process #1
Light Rust Stains on Stone



F9 BARC Process #2 on Vertical Porous and Dense Tile and Stone

FOR: Dark Thick Rust Stains, Pyrite Aggregates, Rust from Metal Fixtures, AC Units and Heavy Irrigation Rust.

PRODUCTS USED: F9 BARC

PURPOSE:

- To remove heavy rust stains from irrigation stains, pyrite aggregates, metal fixtures, AC units and other sources.

DILUTIONS:

1:1 (Water to F9 BARC)

DIRECTIONS:

1. Spray F9 mix onto surface using a mist spray, 1-3x over a period of 2-10 minutes.
2. Don't let product dry. Agitation may be necessary with a soft or stiff bristled brush.
3. Rinse off before it dries or immediately when stain is gone.
4. Repeat if needed.

Be Aware! Using F9 BARC at strong dilutions on polished stone and tile can take out the shine and make the surface dull. Re-polishing may be needed.



BARC Process #2
Heavy Rust Stains on Stone Tile
Full Blast Pressure Washing, LLC
Decatur, AL



Note: Dark rust generally takes a stronger mix to clean or more manual agitation. If the rust is from direct contact of a metal fixture or pyrite aggregate, you may need to use an 8:1 to 2:1 mix of water to F9 Efflo to “cut” into the metal oxides and metallic minerals that have combined with the rust. If this is the case, spray the solution of water to F9 Efflo and agitate. If you need to use F9 Efflo at dilutions stronger than 4:1 to cut into the dark red or black minerals in the rust, you should use an 8:1 mix of water to F9 Double Eagle to neutralize the area (after application of Efflo/scrubbing) before pressure washing off or rinsing. Then continue with the F9 BARC Process at recommended dilutions above.

CAUTION: If you need to use F9 Efflo to cut into mineral oxides or pyrite, be careful using on these building surfaces at strong dilutions > 4:1 as the surface may start to etch. Soft brick and block can etch much more quickly than harder brick and block.

Tile and Stone vary greatly in their compressive strengths, density and ability to handle certain cleaners. Some are porous, some are dense, some are weak and some are strong.

The harder the Tile or Stone is, the more product it can handle and at stronger dilutions/strengths. The stronger and harder the tile or stone is, the easier your cleaning will go and with less worry as to color degradation or possible etching.

The less dense the Tile or Stone is, the more it is prone to etching, flaking or degrading. Be extra cautious on soft tile and stone surfaces not to make Efflo mix too strong for the surface.

Always do a test and demo in an inconspicuous area to determine your process, dilution and application. A simple test will help to see what exactly can be done, will set customer expectations and you will know how to proceed with bidding and chemical usage.

Note on Pyrite Aggregates: Pyrite aggregates are small iron aggregates that can make their way into the mix. They can produce tiny or large pinholes or holes with rust leaking out.

BARC Process #2



F9 BARC Process #3 on Vertical Porous and Dense Tile and Stone

FOR: Window Frame Paint Oxidation Runs, Window Frame Caulk Bleed, Inorganic Black Streaks (not from mold or algae).

PRODUCTS USED: F9 BARC

PURPOSE:

- › To remove streaking from window frame paint oxidation, caulk bleed and to remove inorganic metallic black streaking on siding.

DILUTIONS:

Use 1:1 to Straight

DIRECTIONS:

1. Spray F9 mix onto surface using a mist spray, 1-2 times over a period of just ONE MINUTE. Do not let dry. Pressure Wash. Repeat if needed.
2. If F9 BARC Does Not Work: Switch over to a 4:1 mix of Water to F9 Efflo. Spray on dwell 1 minute, scrub immediately and pressure wash. Be cautious of etching. Use an 8:1 Double Eagle mix to neutralize before pressure washing if grass or masonry surface is directly below where you are working.
3. If using F9 Efflo in #2 does not work, make stronger but be careful of etching surface.

Be Aware! Using F9 BARC on polished stone and tile can take out the shine and make the surface dull. Re-polishing may be needed.

Notes: If you are using F9 Efflo and working on an area with grass, concrete or any masonry surface directly below where you are cleaning, you should also spray an 8:1 Double Eagle mix on the concrete to help neutralize any F9 Efflo mix that gets on it. Rinse flatwork right away if Efflo mix gets on it.

Tile and Stone vary greatly in their compressive strengths, density and ability to handle certain cleaners. Some are porous, some are dense, some are weak and some are strong.

The harder the Tile or Stone is, the more product it can handle and at stronger dilutions/strengths. The stronger and harder the tile or stone is, the easier your cleaning will go and with less worry as to color degradation or possible etching.

The less dense the Tile or Stone is, the more it is prone to etching, flaking or degrading. Be extra cautious on soft tile and stone surfaces not to make Efflo mix too strong for the surface.

Always do a test and demo in an inconspicuous area to determine your process, dilution and application. A simple test will help to see what exactly can be done, will set customer expectations and you will know how to proceed with bidding and chemical usage.

F9 Restoration Flow Chart for Asphalt Roof Shingles and TPO Membranes

PRE CHECKS

**ALWAYS CHECK FOR OXIDATION
BEFORE PROCEEDING**

PRE CLEANING

CLEAN ORGANIC STAINS
Stains including mold, mildew, gloeocapsa magma
first before proceeding to F9 Restoration Processes

STAIN IDENTIFICATION & PROCESS



CONFIDENTIAL
Copyright © 2018 Front 9 Restoration, Inc.

www.Front9Restoration.com | 855.803.1133



F9 COOKBOOK

F9 Rust Removal Process on Asphalt Roof Shingles and TPO Roofing Membranes

FOR: Light and Heavy Rust Staining.

PRODUCTS USED: F9 BARC

PURPOSE:

- › To remove irrigation rust stains and other rust stains from roofing surfaces.

DILUTIONS FOR F9 BARC: WATER TO PRODUCT

1:1 to 2:1 for: Severe Rust Stains

2:1 to 3:1 for: Light to Medium Rust Stains

DIRECTIONS FOR ASPHALT ROOF SHINGLES

See “CAUTION” on top of Page 89 for dangers when using F9 BARC on Shingles.

1. Do an “Oxidation Pre-check” and clean any organic staining first. Rinse well.
2. When no oxidation or organic stains are present, pre-rinse shingles. You want them damp but not puddling.
3. Apply 1-3 mist applications of F9 BARC at proper dilution rates depending on severity of rust over 2-10 minutes.
4. Light brushing is OK and will help to speed up process. Do not let product dry on asphalt shingle!
5. Rinse off product before asphalt dries.
6. Dry asphalt to check results. Repeat if necessary



Rust on Asphalt Roof Shingle
 Cajun Soft Wash
 Baton Rouge, LA



Rust on Cedar
 Shake Shingle

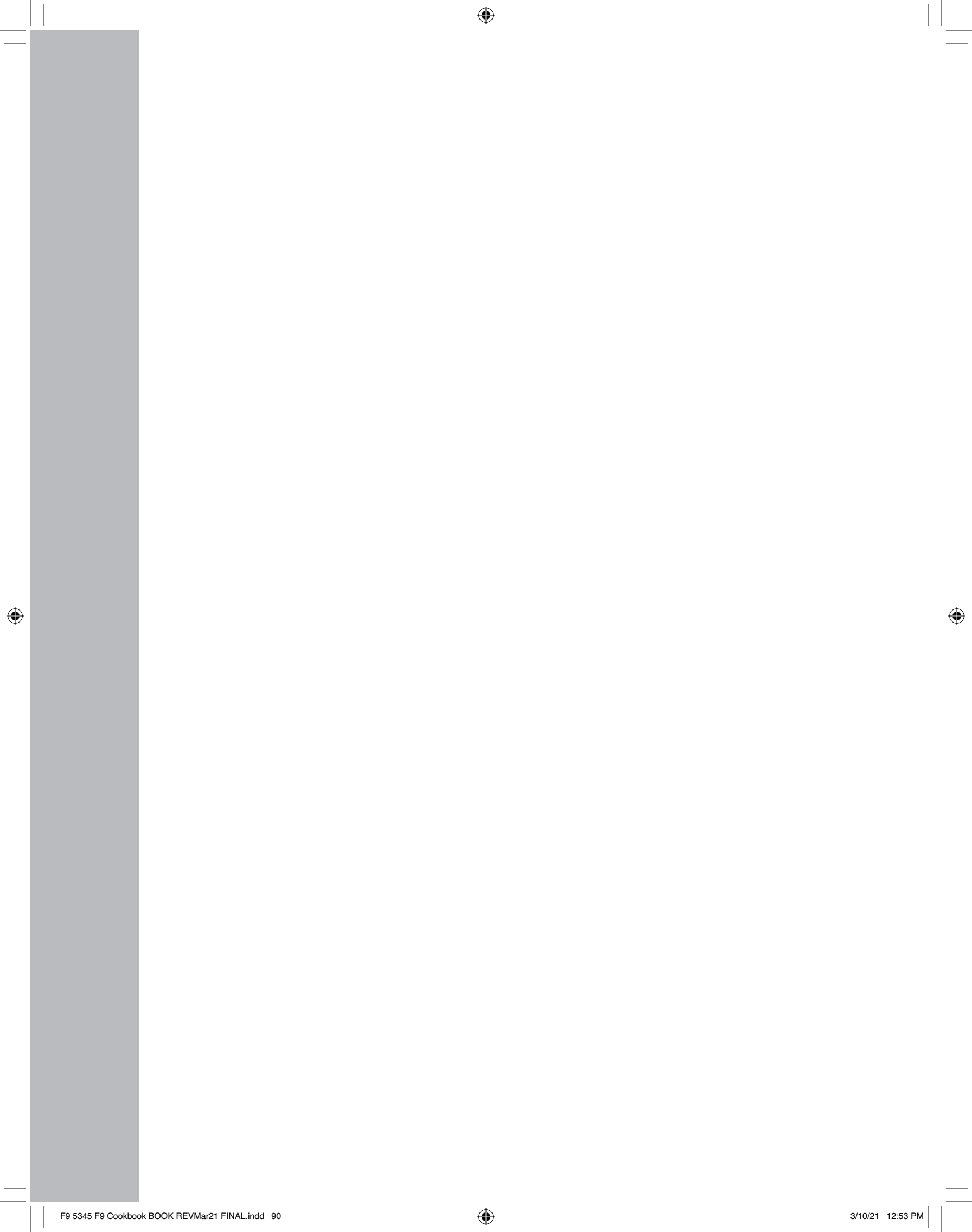
CAUTION! Asphalt shingles are sensitive surfaces.

Some Asphalt shingles can lighten or “bleach out” if product is too strong or left on for too long. Always do a test in an inconspicuous area to make sure Asphalt surface can handle the product in the dilution and process you intend to use on the rust stains.

DIRECTIONS FOR TPO ROOFING MEMBRANE

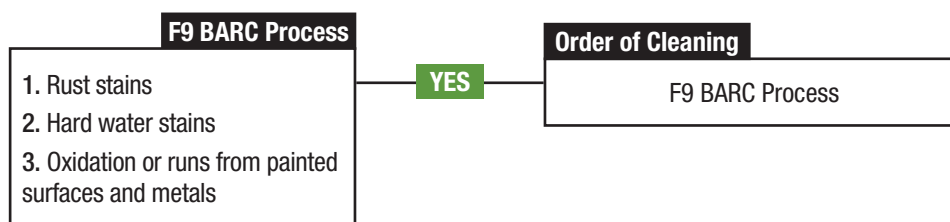
1. Apply 1-3 light mist applications over 2-10 minutes.
2. Light brushing is OK and will help to speed up process. Do not let product dry.
3. Rinse off.





F9 Restoration Flow Chart for Windows

STAIN IDENTIFICATION & PROCESS



CONFIDENTIAL

Copyright © 2018 Front 9 Restoration, Inc.

www.Front9Restoration.com | 855.803.1133



F9 COOKBOOK

F9 BARC Process #1 on Windows

FOR: Rust Stains

PRODUCTS USED: F9 BARC

PURPOSE:

- > To remove rust stains

DILUTIONS:

3:1 to 2:1.

CAUTION! F9 BARC at strong dilutions can etch and pit the window. F9 BARC can haze glass if it is applied too strong or applied on the side which was tin floated. Make sure to do a test and demo on glass! Do not let dry!

DIRECTIONS FOR RUST STAIN REMOVAL

1. Mist glass with water
2. Apply F9 BARC using a mist type of spray from bottom up.
3. Repeat application of BARC 1-3x over 1-5 minutes. Don't let dry and rinse glass before it dries.
4. Repeat if needed.
5. When stains are gone re-wash window with soap and water.



BARC Proces #1 Rust on Windows
Associated Facility Services
Power Washing & Commercial Cleaning
Hattiesburg, MS



F9 BARC Process #2 on Windows

FOR: Hard Water Deposits

PRODUCTS USED: F9 BARC

PURPOSE:

› To remove hard water spots.

DILUTIONS:

8:1 to 2:1. Start diluted and work stronger if needed.

CAUTION! F9 BARC at strong dilutions can etch and pit the window. F9 BARC can haze glass if it is applied too strong or applied on the side which was tin floated. Make sure to do a test and demo on glass! Do not let dry!

DIRECTIONS FOR HARD WATER DEPOSITS

1. Pre-clean glass with soap and water.
2. Apply F9 BARC using a mist type of spray from bottom up.
3. Let dwell 3-6 minutes. Do not let dry! If window begins to dry, gently mist with water.
4. Use a 0000 steel wool or equivalent to agitate. A second coat may be needed if spots don't come off. If BARC begins to dry, gently mist with water.
5. Reapply 2nd coat if needed and dwell 3-5 minutes. Do not let dry.
6. Use a 0000 wool or equivalent to agitate. Reapply in stubborn areas and repeat.
7. When stains are gone re-wash window with soap and water.

F9 BARC Process #3 on Windows

FOR: Oxidation from Painted Surfaces or Metal Runs

PRODUCTS USED: F9 BARC

PURPOSE:

- > To remove oxidation from paint and metal

DILUTIONS:

3:1 to 1:1.

CAUTION! F9 BARC at strong dilutions can etch and pit the window. F9 BARC can haze glass if it is applied too strong or applied on the side which was tin floated. Make sure to do a test and demo on glass! Do not let dry!

DIRECTIONS FOR OXIDATION REMOVAL

1. Mist glass with water
2. Apply F9 BARC using a mist type of spray from bottom up.
3. Let dwell 1 minute and scrub with 0000 steel wool or equivalent. Do not let window dry.
4. Rinse window.
5. Repeat if needed.
6. When stains are gone re-wash window with soap and water.



BARC Process Windows
for Oxidation from Paint and Metal
Silverback Exterior Cleaning
United Kingdom

F9 BARC and Efflo Other Uses

FOR: Other Uses

PRODUCTS USED: BARC and Efflo

F9 BARC: OTHER USES

- › Clean Carwash Bays
- › Remove Black Streaks from Siding that are Not Organic
- › TPO Membrane Cleaning: We are approved with Carlisle
- › Aluminum Cleaning but not Polished Aluminum like Diamond Plate
- › Wheel Cleaner
- › Boat Cleaner, Including Fiberglass Hull, Upholstery and Chrome
- › Stainless Steel Cleaner
- › Wood Cleaner

F9 EFFLO: OTHER USES

- › Can Aid in Removing Some Rust Stains (from Metals)
- › Prep Concrete for Coating or Stain and Seal
- › Improve the COF

For any of the above methods please call 855-803-1133

NOTES



One Gallon Mix Ratios

Ratio 128oz 1 Gallon	Product (Ounces)	Water (Ounces)
1:1	64	64
2:1	42.7	85.3
3:1	32	96
4:1	25.6	102.4
5:1	21.3	106.7
6:1	18.3	109.7
7:1	16	112
8:1	14.2	113.8
9:1	12.8	115.2
10:1	11.6	116.4
11:1	10.7	117.3

Five Gallon Mix Ratios

Ratio 640oz 5 Gallons	Product (Ounces)	Water (Ounces)
1:1	320	320
2:1	213.3	426.7
3:1	160	480
4:1	128	512
5:1	106.7	533.3
6:1	91.4	548.6
7:1	80	560
8:1	71.1	568.9
9:1	64	576
10:1	58.2	581.8
11:1	53.3	586.7

*Always add product to water, not water to product. Water goes in first!



FRONT 9 RESTORATION
World's Best Restoration Cleaners

p: 855-803-1133 | f: 480-393-5094 | P.O. Box 4099 | Palm Desert, CA 92261 | www.Front9Restoration.com



STRENGTH, POWER, RESULTS!

Oils & Soils



F9™ Double Eagle™



Calcium & Efflorescence



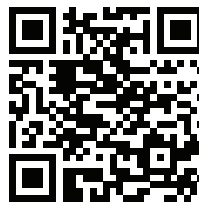
F9™ EFFLO™



Rust & Battery Stains



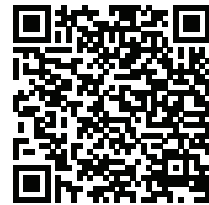
F9™ BARC™



Tire Marks & Maintenance



F9™ GroundsKeeper™



FOR DETAILED INSTRUCTION DOWNLOAD THE FRONT 9 APP



FRONT 9 RESTORATION
World's Best Restoration Cleaners

p: 855-803-1133 | f: 480-393-5094 | P.O. Box 4099 | Palm Desert, CA 92261 | www.Front9Restoration.com